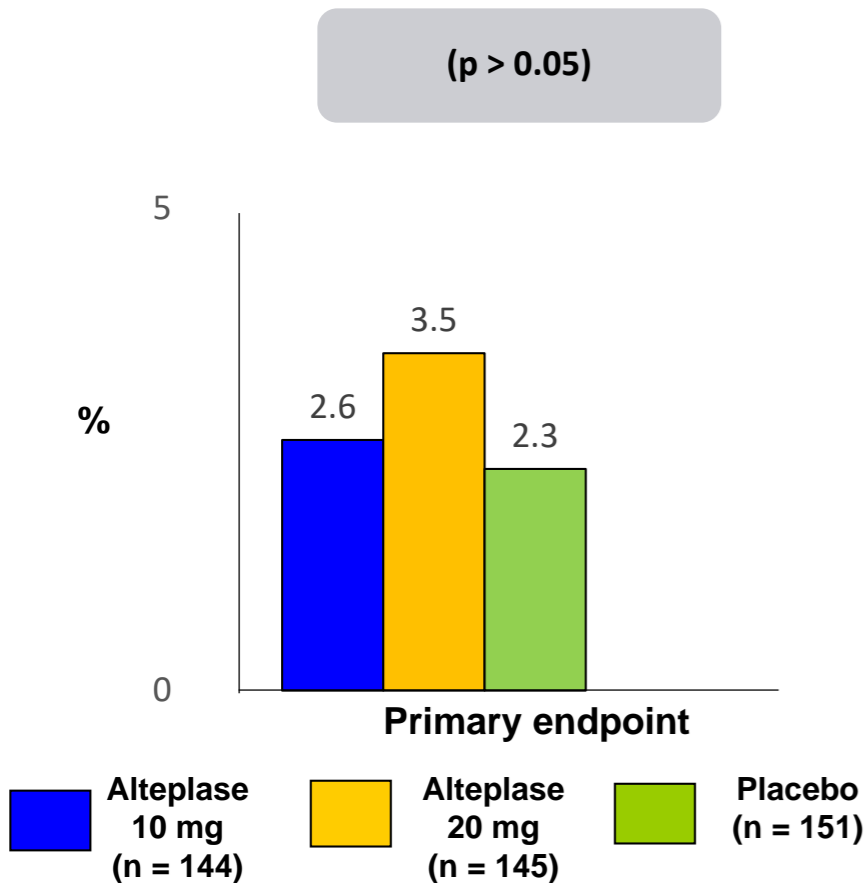


# T-TIME

## #AHA18



**Trial description:** Patients with STEMI undergoing primary PCI were randomized in 1:1:1 fashion to either intracoronary alteplase 10 mg, alteplase 20 mg, or placebo. Patient follow-up 3 months; trial was stopped early for futility.



### RESULTS

- Primary endpoint, amount of MVO as % of LV mass, for alteplase 10 mg vs. alteplase 20 mg vs. placebo: 2.6% vs. 3.5% vs. 2.3%,  $p > 0.05$
- MACE: 12.9% vs. 8.2% vs. 10.1%,  $p = 0.43$
- TIMI myocardial perfusion grade 0/1: 44.5% vs. 40.0% vs. 37.8%

### CONCLUSIONS

- Adjunctive low-dose alteplase at the time of primary PCI among patients presenting with STEMI did not reduce the incidence of MVO on MRI and resulted in larger MIs
- MVO is common after STEMI and no single intervention has been shown to have a convincing benefit

McCartney PJ, et al. JAMA 2019;321:56-68