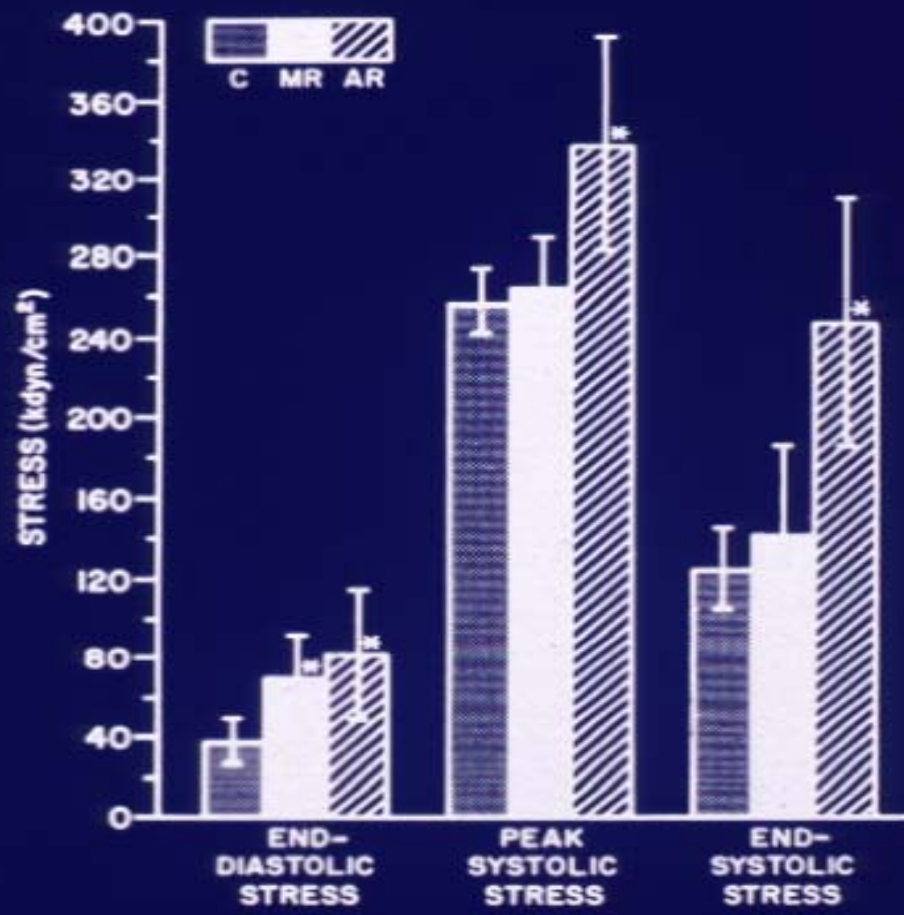
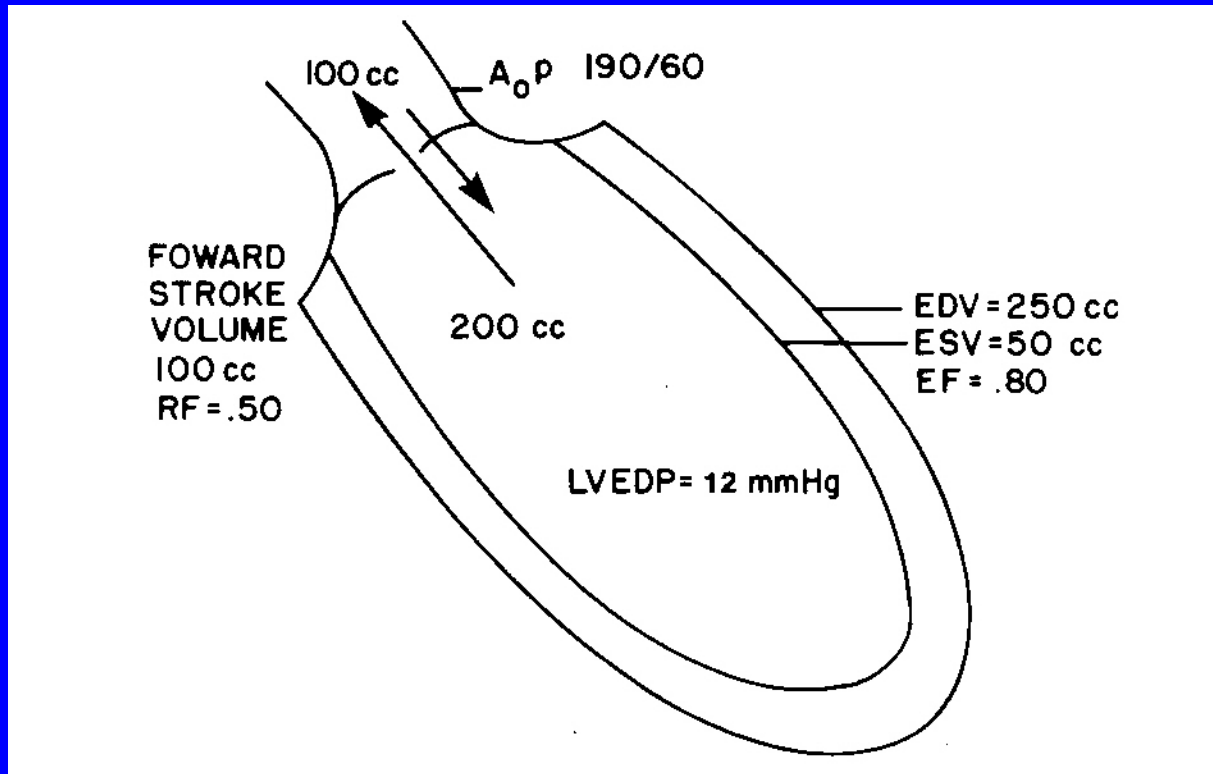


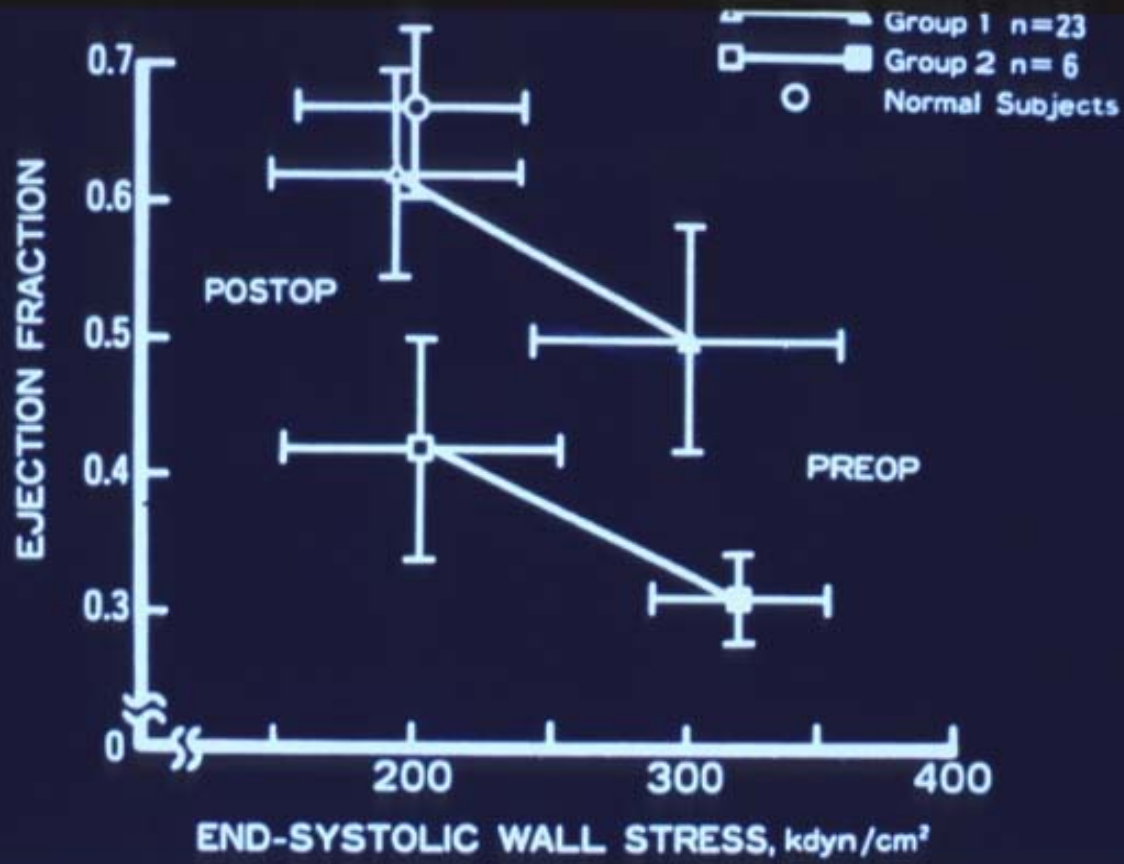
TIMING OF AVR

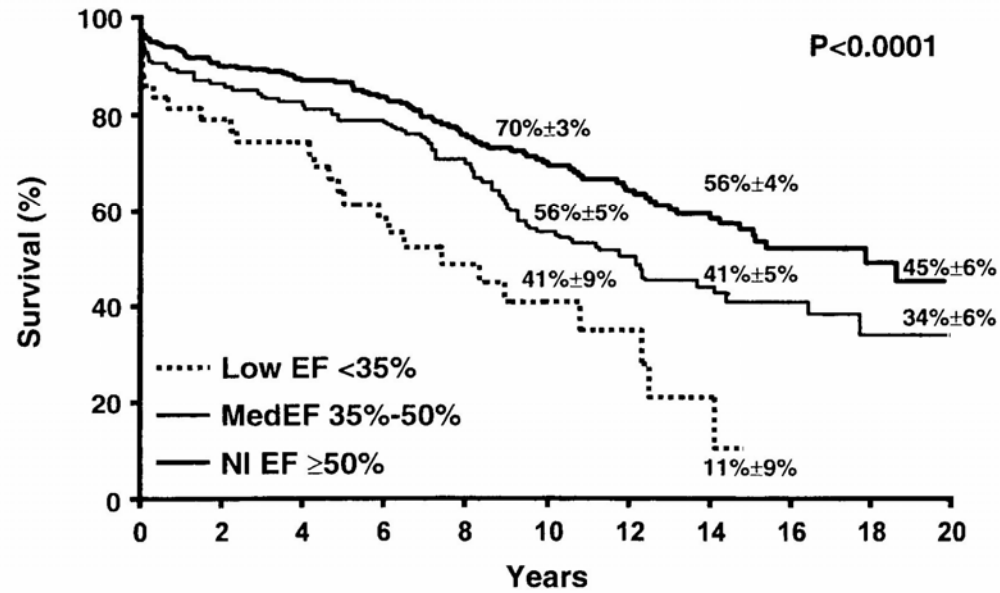
IS IT EVER TOO LATE





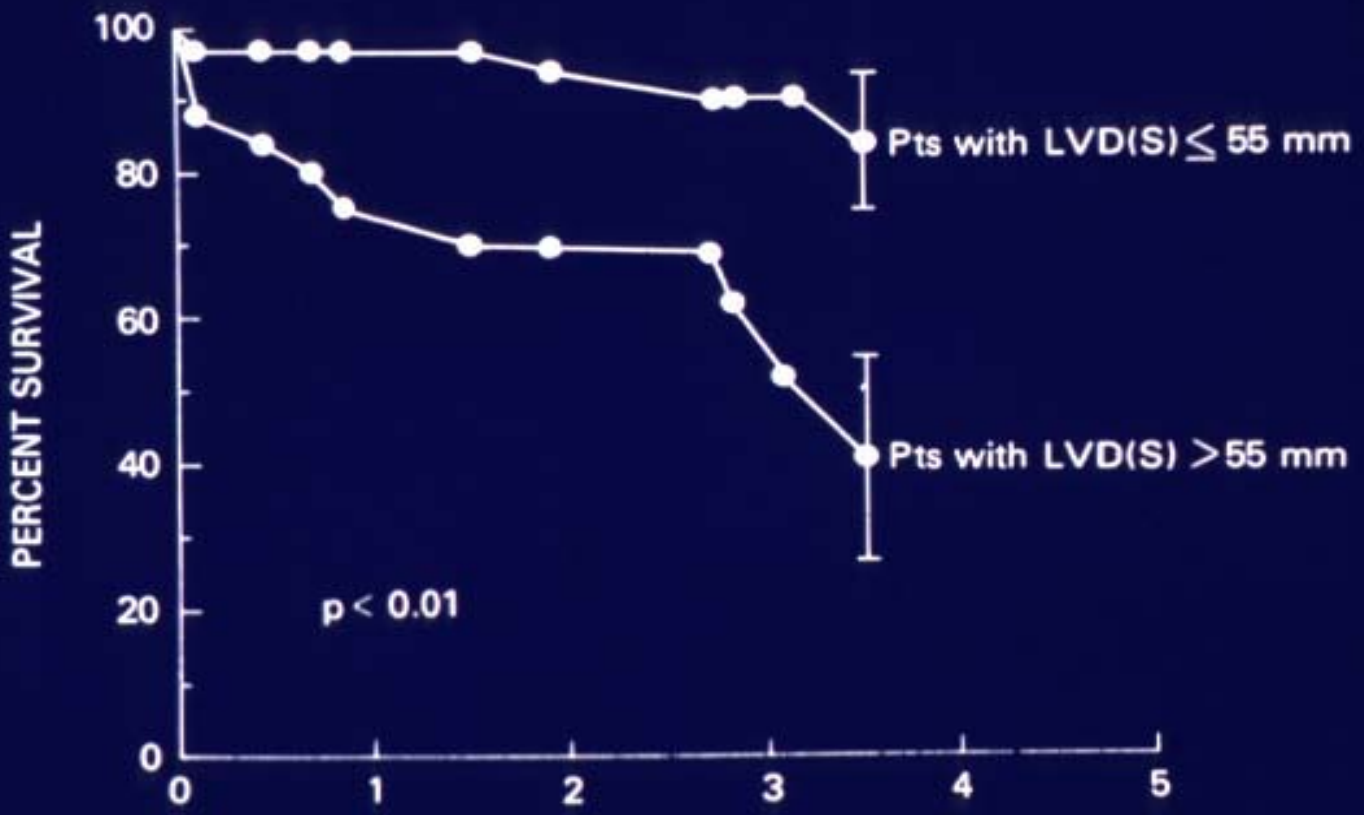
Author: BA Carabello

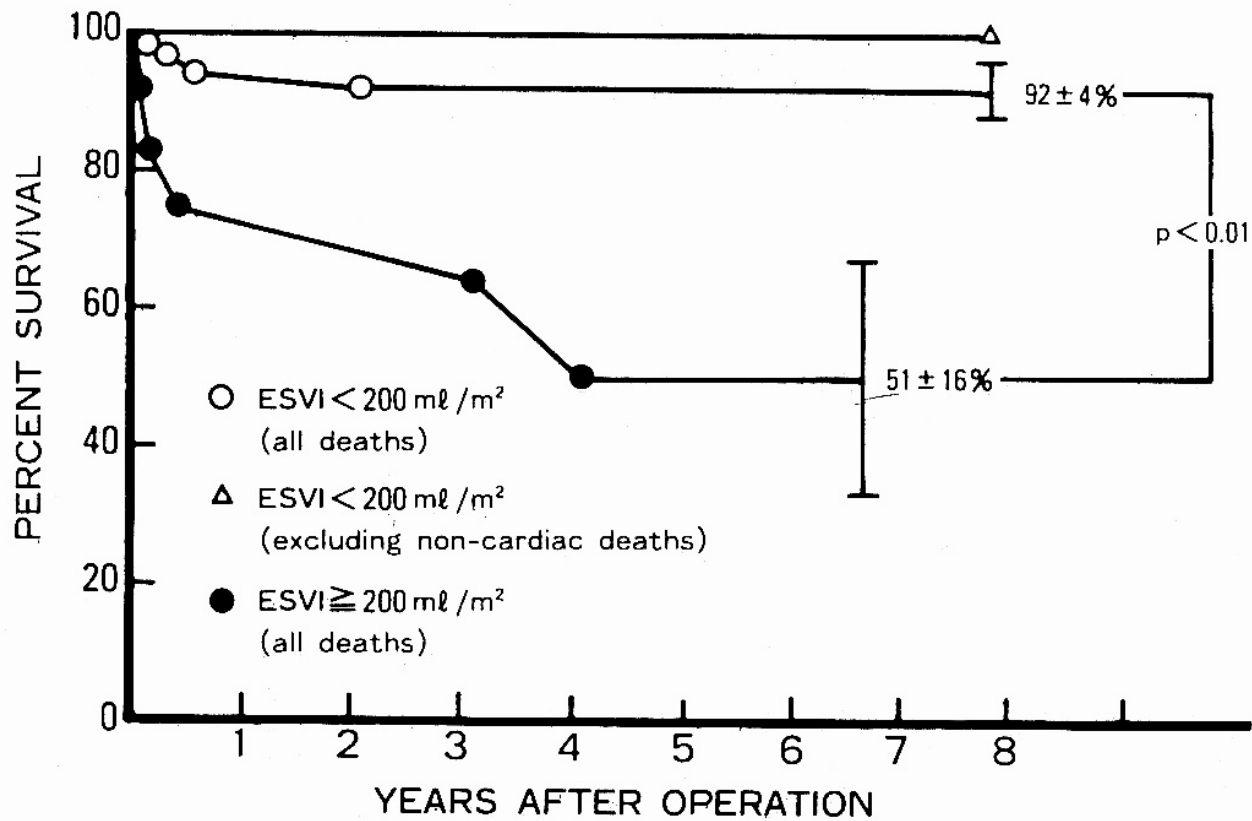




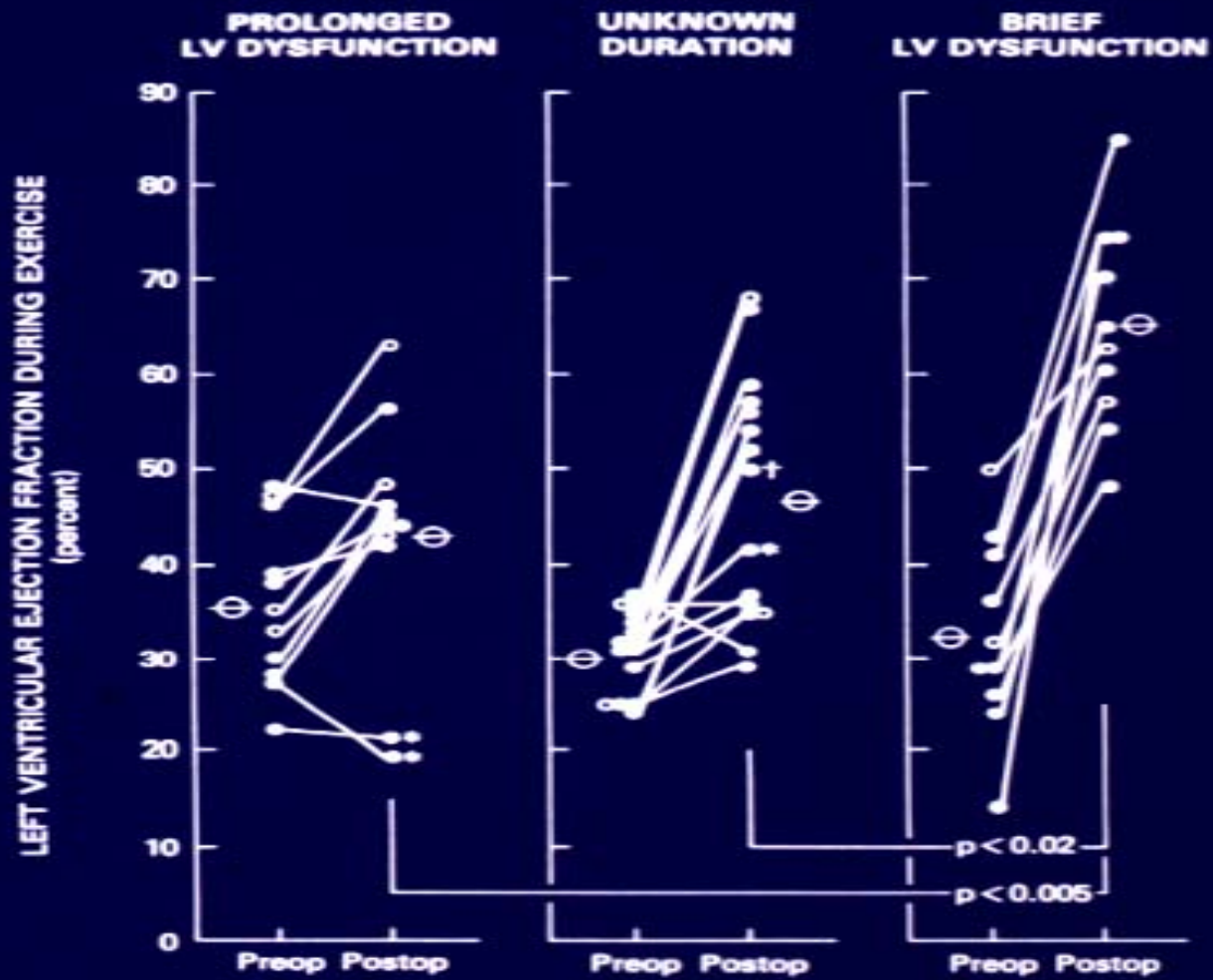
LoEF (EF <35%)	43	35	31	21	15	8	6	3			
MedEF (EF 35%-50%)	134	115	108	95	78	50	34	30	19	9	2
NI EF (EF ≥50%)	273	245	231	184	141	112	83	60	32	17	1

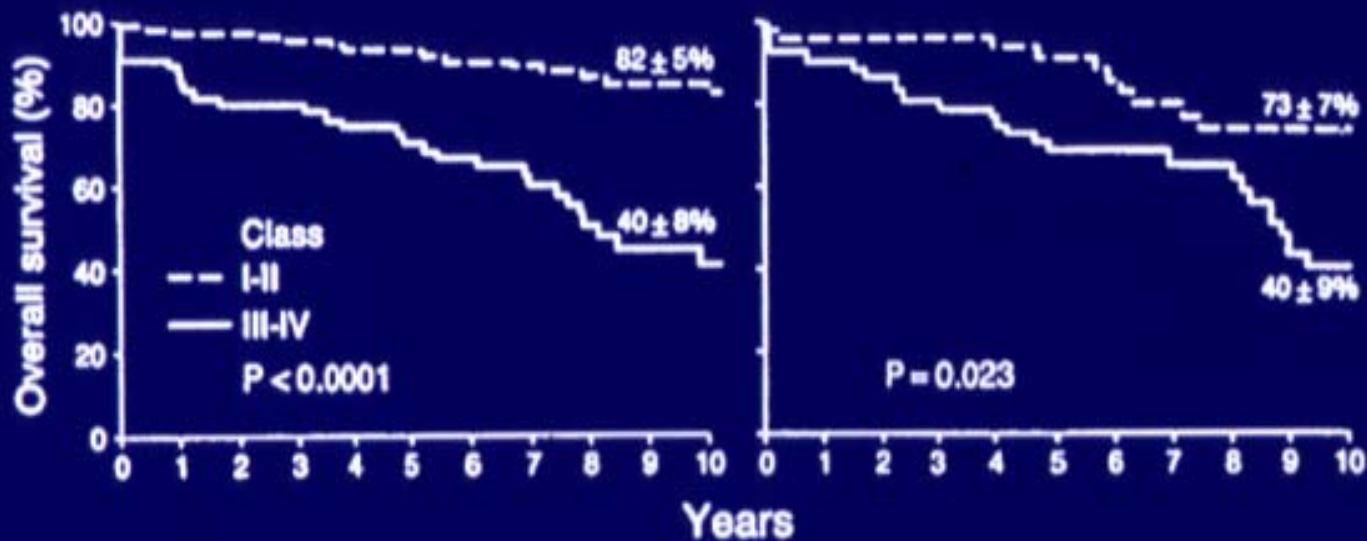
Chaliki et al





TANIGUCHI





I-II	n = 99	95	95	93	91	85	71	67	57	47	35	45	41	41	41	40	34	31	25	20	15	14
III-IV	n = 54	47	42	42	39	36	31	26	19	14	10	51	45	43	40	38	32	24	21	20	12	11

66 Y/O WITH AR FOR 25 YRS

- CLASS III S_x
- BP: 130/50
- EDD: 78 mm; ESD: 65mm; EF: 0.25

66 Y/O WITH AR FOR 25 YRS

- CLASS III Sx for at least 3 years
- BP: 90/70
- EDD: 78 mm; ESD: 70mm; EF: 0.18

CONCLUSION

- AS WITH AORTIC STENOSIS, IT'S ALMOST NEVER TOO LATE TO OPERATE ON THE Pt WITH AR
- SYMPTOMS, ANY SYMPTOMS ARE BAD
- ITS BAD TO HAVE A BIG HEART

PROLONGED LV SEVERE DYSFUNCTION
IN A HYPOTENSIVE Pt ???