

62 Y/O MAN

- 99% L MAIN
- EF 0.60
- JET 3.0 m/sec
- AVA 1.2 cm²

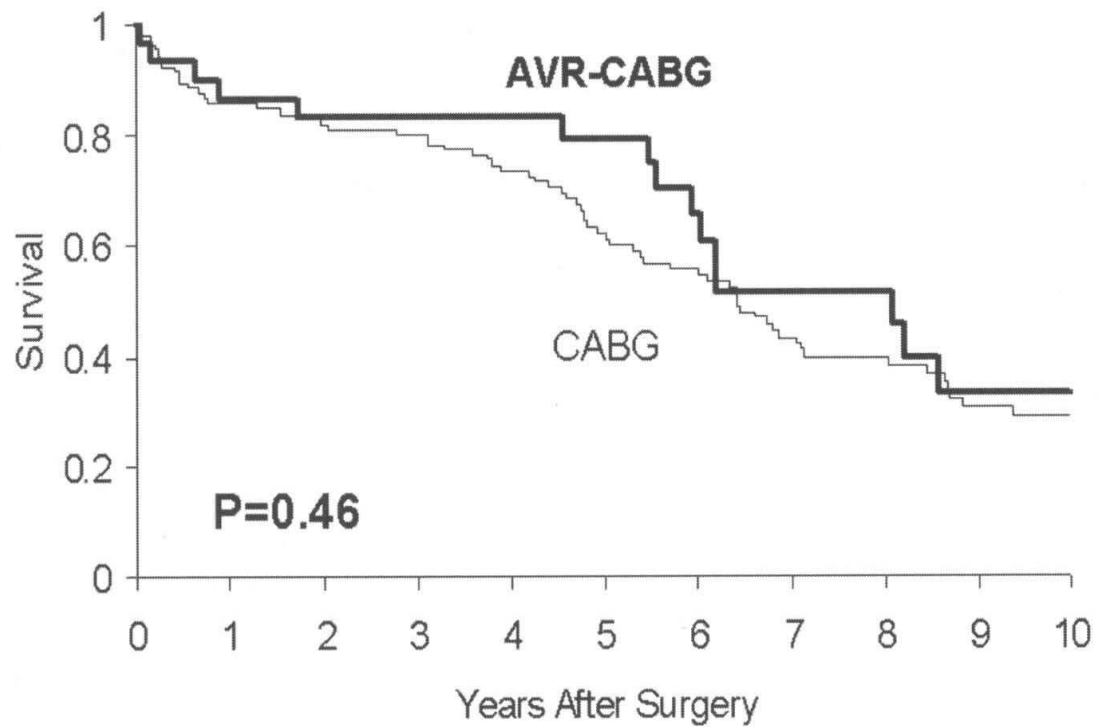
AS PROGRESSION

0-20 mm Hg/ yr

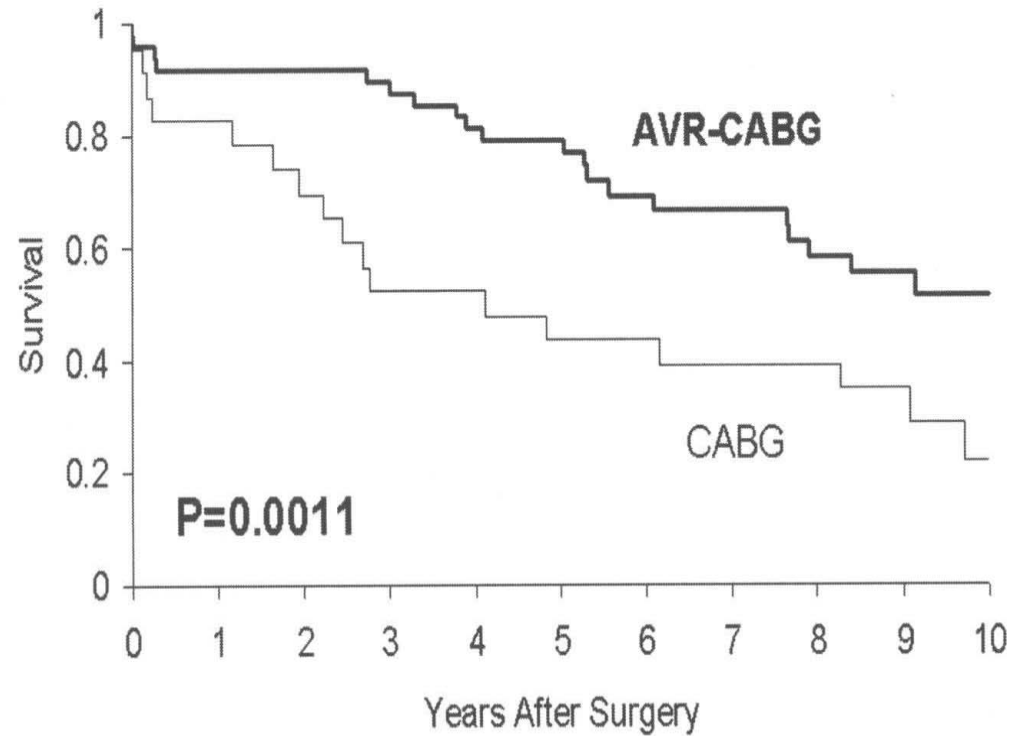
-0 – 0.2 cm²

OPERATIVE RISK

- 2% CABG
- 3.5% AVR
- 7.0% AVR+CABG



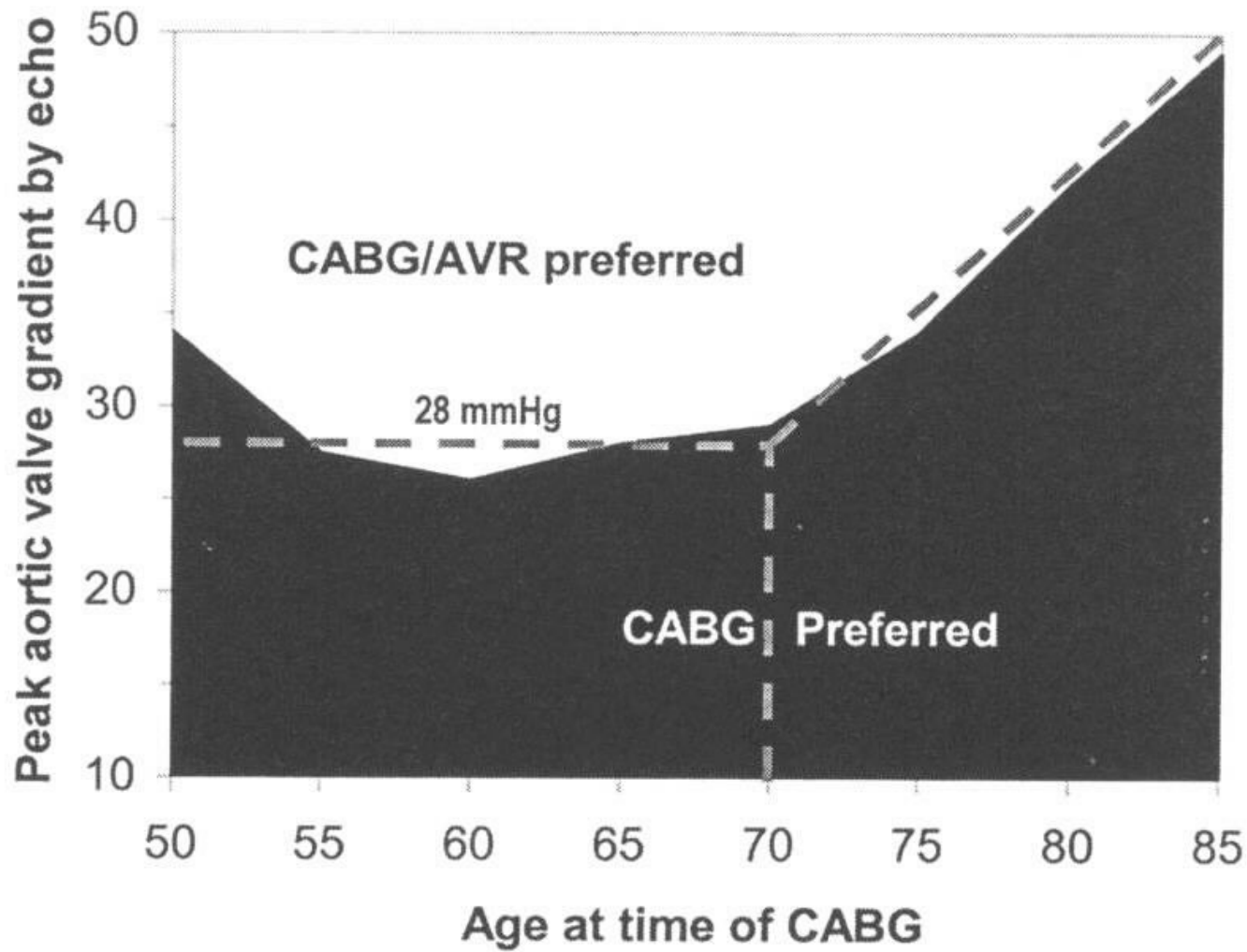
AVR-CABG	30	26	25	25	22	19	14	9	9	5	3
CABG	106	91	87	85	76	59	51	37	28	19	16



AVR-CABG	48	44	44	43	39	35	25	24	21	16	11
CABG	23	18	15	11	11	9	9	8	7	5	2

SMITH et al

- 1,300,000 Pts UNDERGOING CABG OR CABG + AVR STS DATA BASE
- USED U.S. LIFE TABLES



CLASS 1 INDICATIONS FOR AVR

- SEVERE SYMPTOMATIC AS
- SEVERE AS IN Pt UNDERGOING ANOTHER HEART Sx
- SEVERE AS AND EF <0.50

Ila

MODERATE AS IN Pt UNDERGOING
ANOTHER HEART Sx

II b

- ASYMPTOMATIC, ABN EX TEST
- ASYMPTOMATIC RAPID PROGRESSION, HEAVY CALCIUM
- ASYMPTOMATIC AND VERY SEVERE: JET >5m/s, AVA < 0.6, OP RISK < 1%