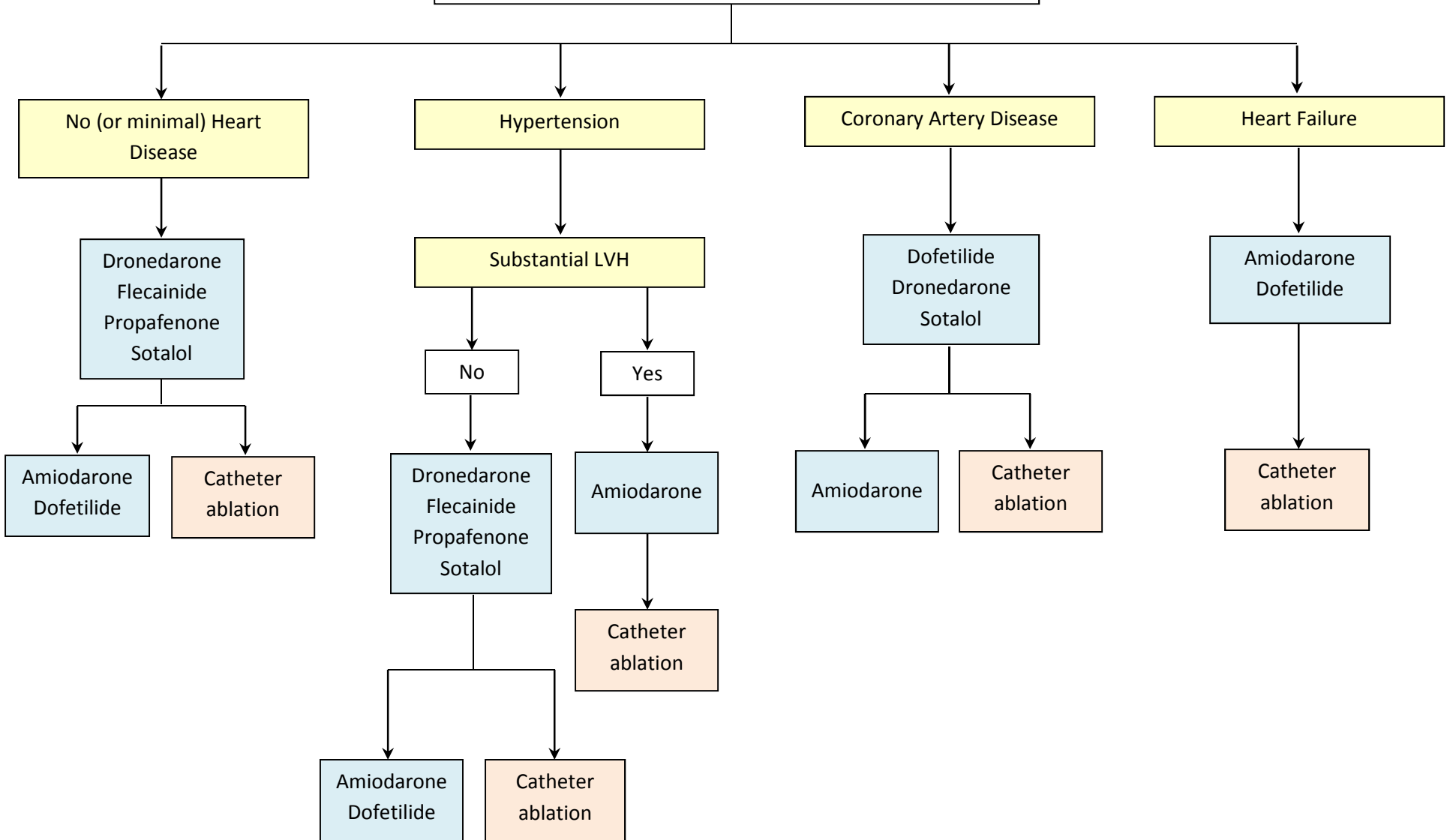


Maintenance of Sinus Rhythm

(for patients with recurrent paroxysmal or persistent atrial fibrillation)



Note: Drugs are listed alphabetically and not in order of suggested use. The seriousness of heart disease progresses from left to right, and selection of therapy in patients with multiple conditions depends on the most serious condition present. LVH indicates left ventricular hypertrophy.

Modified from Fuster et al. (2) (formerly Figure 15 from 2006 Section 8.3.3).

2-8-12 © 2012 American College of Cardiology Foundation