

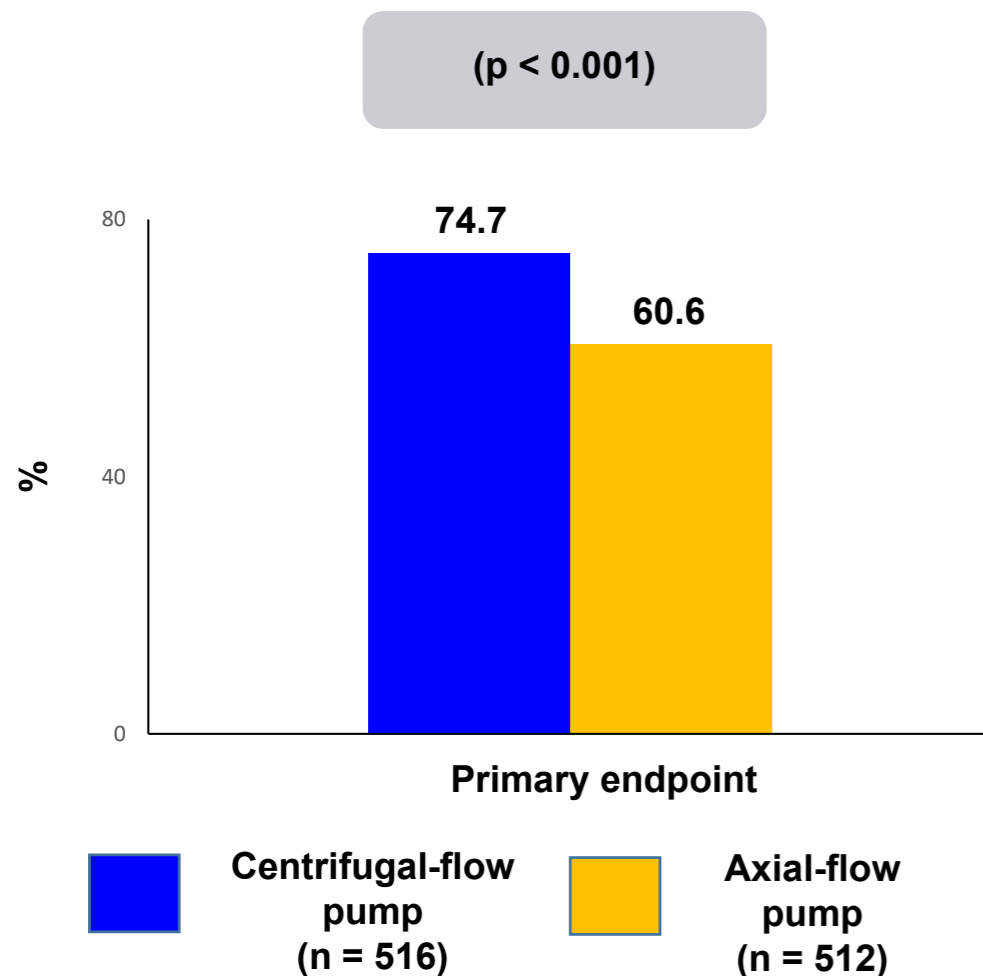
# MOMENTUM 3 – Final Report

#ACC19



AMERICAN  
COLLEGE of  
CARDIOLOGY

**Trial Description:** Patients with advanced heart failure were randomized to a centrifugal-flow pump versus an axial-flow pump.



## RESULTS

- Survival free from disabling stroke or reoperation to replace/remove a malfunctioning device at 24 months: 74.7% of the centrifugal-flow pump group vs. 60.6% of the axial-flow pump group ( $p < 0.001$  for superiority)
- Overall survival at 24 months: 79.0% in the centrifugal-flow pump group vs. 76.7% in the axial-flow pump group ( $p = 0.37$ )
- Any stroke at 24 months: 9.9% in the centrifugal-flow pump group vs. 19.4% in the axial-flow pump group ( $p < 0.001$ ).

## CONCLUSIONS

- Among patients with advanced heart failure, the HeartMate 3 centrifugal-flow pump was superior to the Heartmate II axial-flow pump at improving survival free from disabling stroke or reoperation. Overall survival was similar between the groups.

Mehra MR, et al. N Engl J Med 2019;Mar 17:[Epub]