

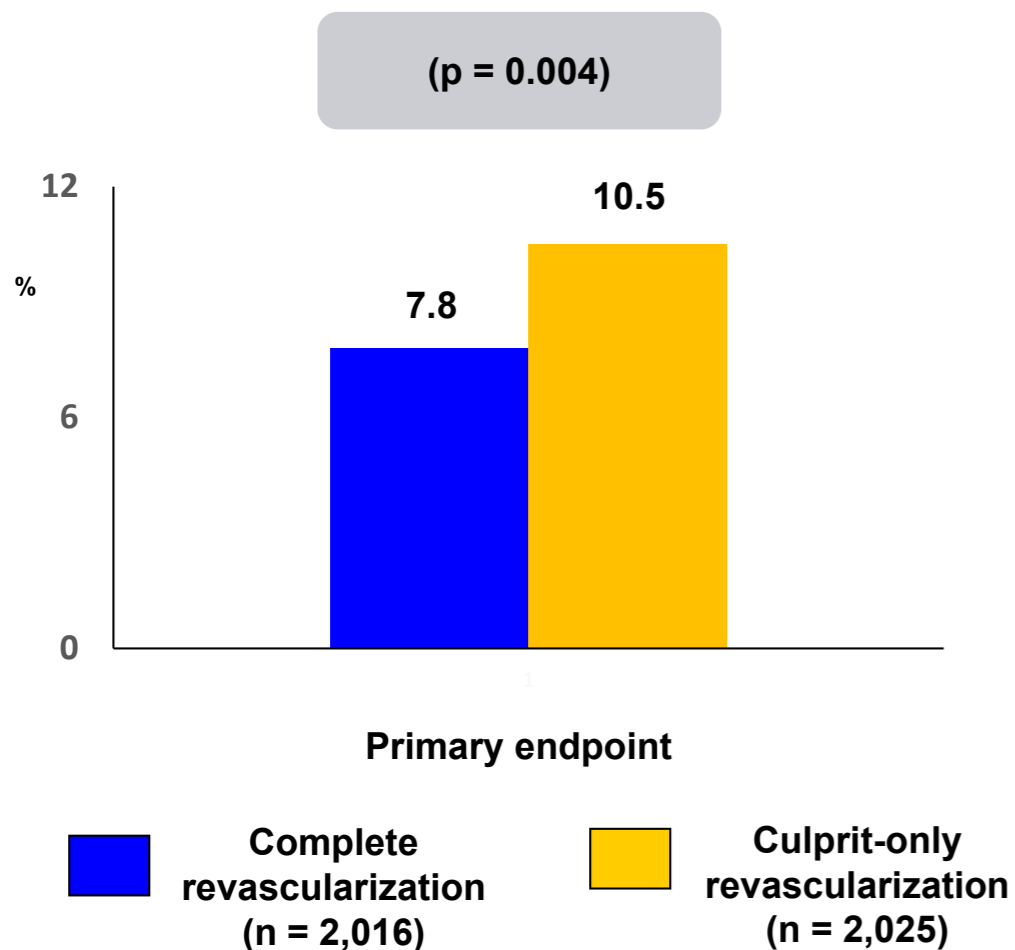
# COMPLETE

## #ESCCongress



AMERICAN  
COLLEGE of  
CARDIOLOGY®

**Trial Description:** Patients with STEMI and multivessel coronary disease were randomized to complete revascularization versus culprit-only revascularization.



### RESULTS

- Primary efficacy endpoint: cardiovascular death or myocardial infarction at 3 years occurred in 7.8% with complete revascularization compared with 10.5% with culprit-only revascularization (p = 0.004)
- Major bleeding: 2.9% with complete revascularization vs. 2.2% with culprit-only revascularization (p = 0.15)
- Contrast-induced nephropathy: 1.5% with complete revascularization vs. 0.9% with culprit-only revascularization (p = 0.11)

### CONCLUSIONS

- Among patients with STEMI and multivessel disease undergoing primary PCI, complete revascularization was superior to culprit-only revascularization

Mehta SR, et al. *N Engl J Med* 2019;Sep 1:[Epub]