

# OPTIMIZE IDE

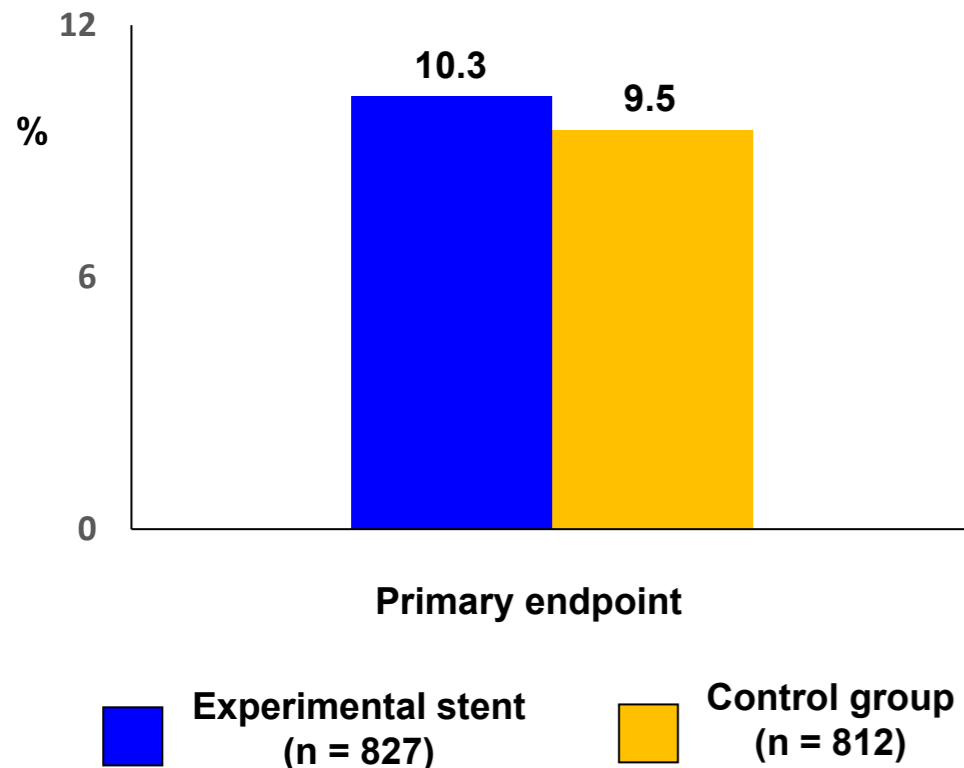
#TCT2020



AMERICAN  
COLLEGE of  
CARDIOLOGY

**Trial Description:** Patients undergoing primary PCI were randomized to the Svelte drug-eluting stent group versus a control drug-eluting stent.

(p for noninferiority = NS)



## RESULTS

- Primary outcome, 12-month target lesion failure (cardiac death, target vessel MI, or clinically driven target lesion revascularization), occurred in 10.3% of the Svelte group compared with 9.5% of the control group (p for noninferiority = not significant)

## CONCLUSIONS

- Among patients undergoing PCI, the Svelte drug-eluting stent did not meet the threshold for noninferiority with respect to the composite outcome of target lesion failure

Presented by Dr. Dean Kereiakes at TCT Connect 2020