



SWEDEHEART

Long-term Clinical Outcomes After iFR vs. FFR-guided Coronary Revascularization Insights from the SWEDEHEART National Registry

***Matthias Götberg, MD, Assoc Prof. Director Cardiac Cath lab
Department of Cardiology, Skane University Hospital
Lund University, Sweden***

Disclosure of Relevant Financial Relationships

Within the prior 24 months, I have had a relevant financial relationship with a company producing, marketing, selling, re-selling, or distributing healthcare products used by or on patients:

Nature of Financial Relationship

Consultant Fees/Honoraria

Ineligible Company

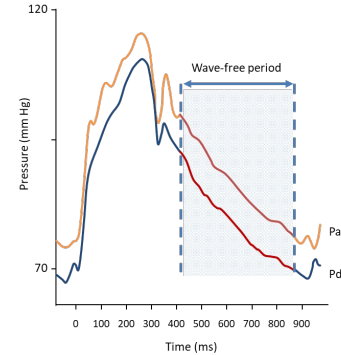
Abbott Vascular, Boston Scientific,
Medtronic, Philips IGT

All relevant financial relationships have been mitigated.

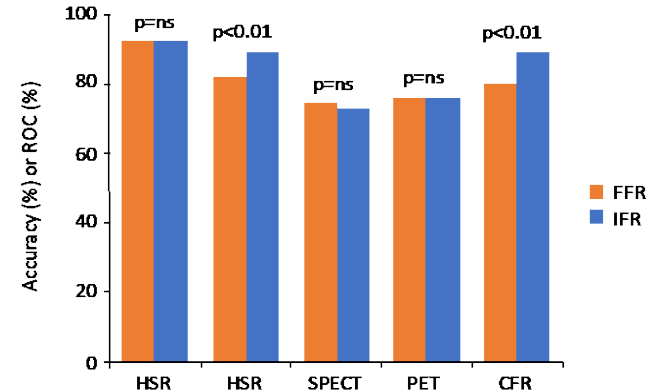
Faculty disclosure information can be found on the app

Background

Instantaneous Wave-free ratio (iFR) is a non-hyperemic index for assessment of coronary lesion severity



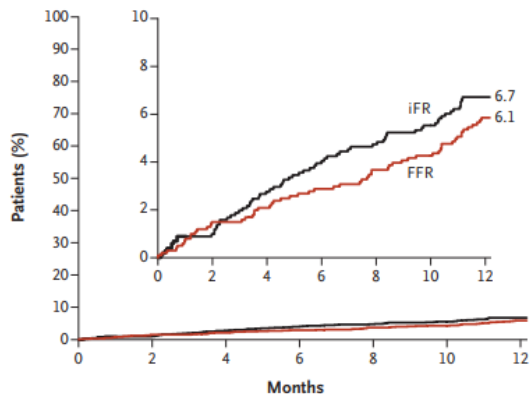
iFR-validation studies have demonstrated $\approx 85\%$ agreement with Fractional Flow Reserve (FFR). iFR and FFR have similar agreement with other ischemic indices



iFR vs FFR 1-year outcomes

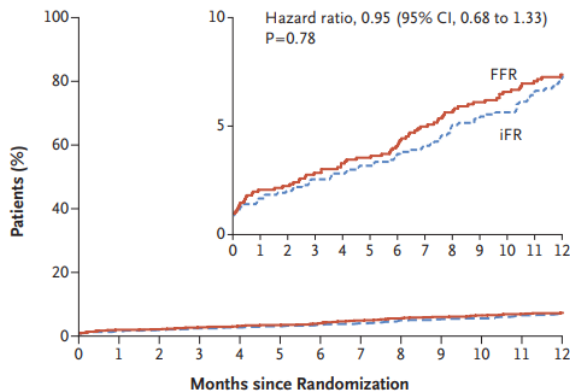
All-cause death, MI, unplanned revascularization

iFR-SWEDEHEART



HR 1.12 (0.79-1.58)
p=0.53

DEFINE-FLAIR



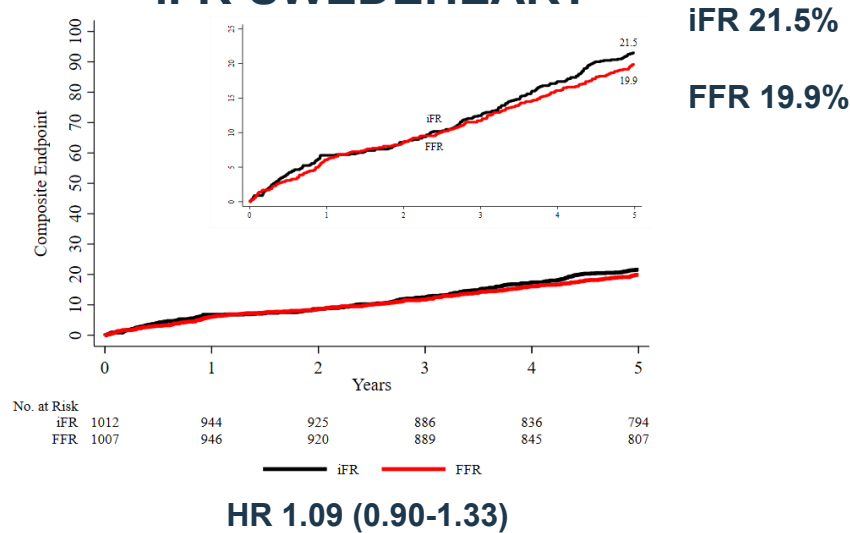
HR 0.95 (0.68-1.33)
p=0.78

iFR was non-inferior to FFR at 1-year

iFR vs FFR 5-year outcomes

All-cause death, MI, unplanned revascularization

iFR-SWEDEHEART

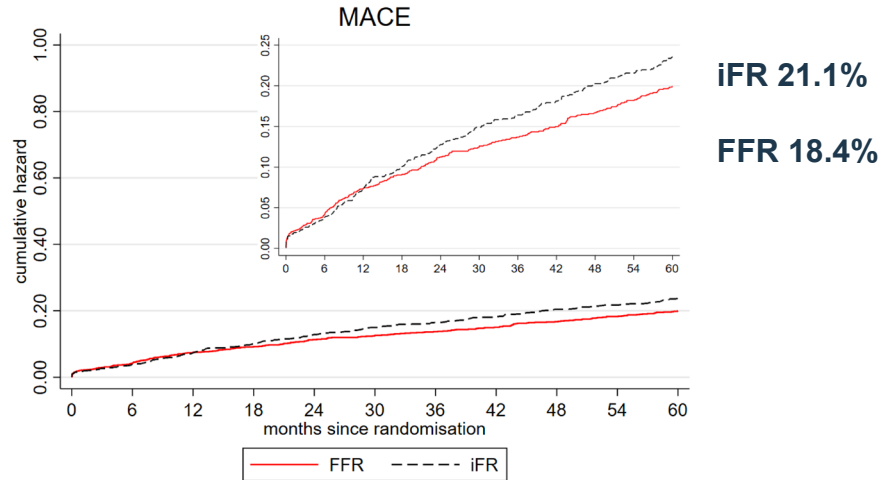


No difference in MACE, death, MI, or unplanned revasc. at 5 years

iFR vs FFR 5-year outcomes

All-cause death, MI, unplanned revascularization

DEFINE-FLAIR



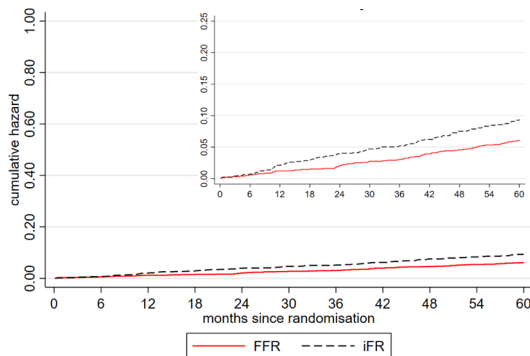
HR 1.18 (95%CI 0.99-1.42), $p=0.06$

No difference in MACE at 5 years

iFR vs FFR 5-year outcomes

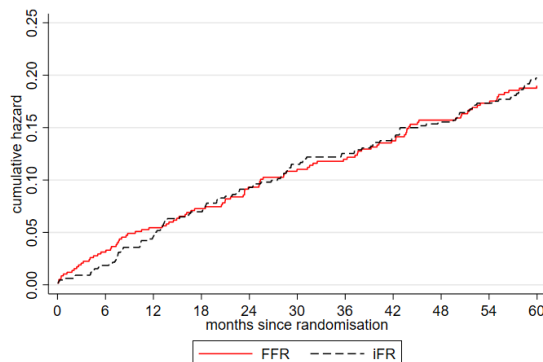
DEFINE-FLAIR

All-cause death



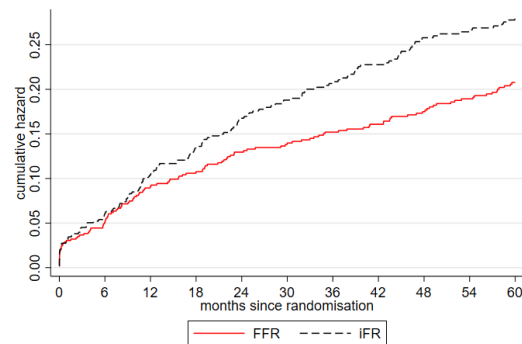
HR 1.56 (95% CI 1.16-2.09)
 $P < 0.01$

MACE deferred



HR 1.03 (95% CI 0.79-1.35)
 $p = 0.80$

MACE treated



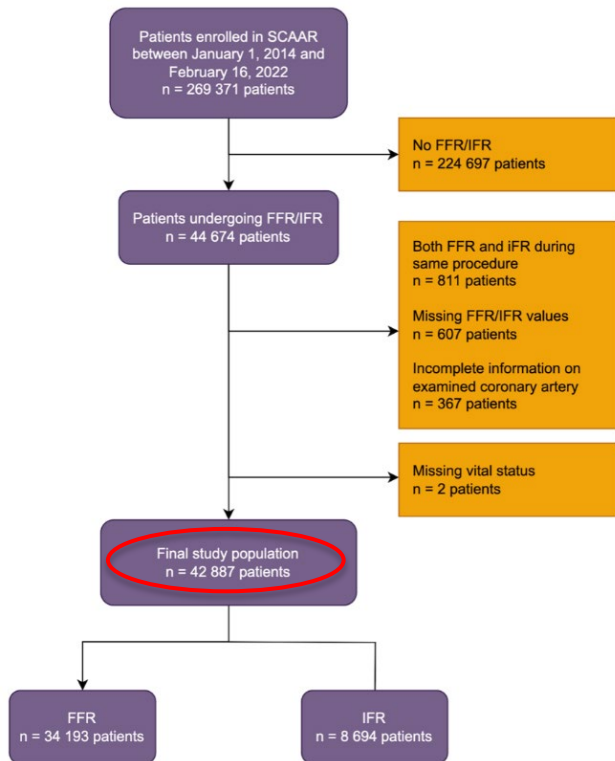
HR 1.36 (95% CI 1.07-1.72)
 $p = 0.01$

DEFINE-FLAIR: Significant increase in mortality with iFR

Signal restricted to treated patients driving MACE

No difference in MI or unplanned revascularization

Swedeheart National Registry Analysis



42887 patients included in the analysis

Follow-up up to 5 years:

National Population Registry (mortality)

SWEDHEART (revasc with PCI)

National Patient Registry (MI, revasc with CABG)

100% tracking of all patients

Baseline characteristics

	Total	FFR	IFR	P-value
	42887 (100.0%)	34193 (79.7%)	8694 (20.3%)	
Age (years) – median (IQR)	69.0 (61.0–75.0)	69.0 (61.0–75.0)	69.0 (61.0–75.0)	0.08
Men	31797 (74.1%)	25509 (74.6%)	6288 (72.3%)	<0.001
Diabetes	10312 (24.0%)	8129 (23.8%)	2183 (25.1%)	0.01
Hypertension	31725 (74.0%)	25246 (73.8%)	6479 (74.5%)	0.19
Previous myocardial infarction	12897 (30.1%)	10138 (29.6%)	2759 (31.7%)	<0.001
Previous PCI	15863 (37.0%)	12640 (37.0%)	3223 (37.1%)	0.87
Stroke	2598 (6.1%)	2026 (5.9%)	572 (6.6%)	0.02
Chronic heart failure	4410 (10.3%)	3510 (10.3%)	900 (10.4%)	0.81
Peripheral artery disease	1947 (4.5%)	1549 (4.5%)	398 (4.6%)	0.85
Chronic obstructive pulmonary disease	2771 (6.5%)	2139 (6.3%)	632 (7.3%)	0.001
Renal failure	1637 (3.8%)	1283 (3.8%)	354 (4.1%)	0.17
Cancer	1547 (3.6%)	1203 (3.5%)	344 (4.0%)	0.05

Baseline differences between iFR vs. FFR

iFR more often utilized in women, DM, MI, stroke, COPD

Deferred vs. treated

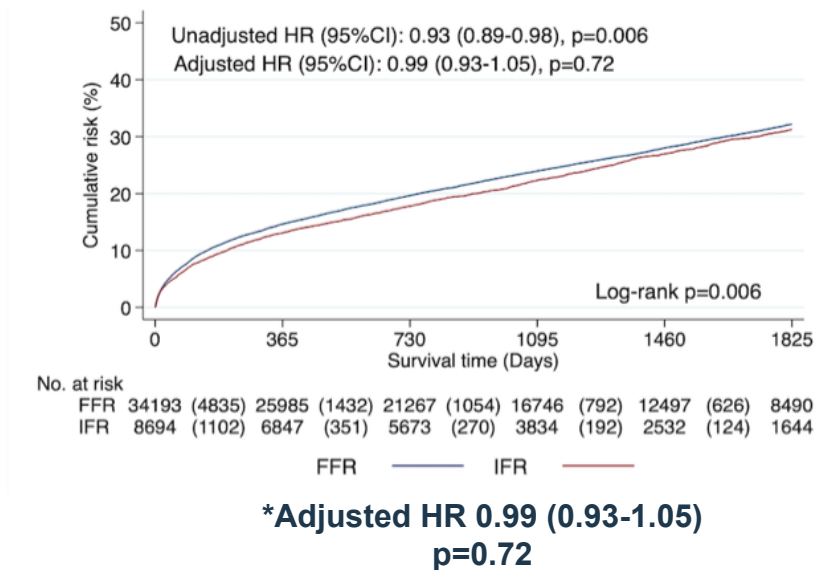
	Total	Deferred FFR	iFR	P-value	Total	Treated FFR	iFR	P-value
Age (years) – median (IQR)	69.0 (62.0-75.0)	69.0 (62.0-75.0)	69.0 (61.0-75.0)	0.053	68.0 (61.0-74.0)	68.0 (61.0-74.0)	70.0 (61.0-75.0)	<0.001
Men	19983 (71.3%)	15609 (71.3%)	4374 (71.1%)	0.772	11814 (79.6%)	9900 (80.5%)	1914 (75.3%)	<0.001
Diabetes	6464 (23.1%)	5039 (23.0%)	1425 (23.2%)	0.808	3848 (25.9%)	3090 (25.1%)	758 (29.8%)	<0.001
Hypertension	20837 (74.3%)	16283 (74.4%)	4554 (74.0%)	0.588	10888 (73.3%)	8963 (72.9%)	1925 (75.7%)	0.003
Previous myocardial infarction	8282 (29.5%)	6371 (29.1%)	1911 (31.1%)	0.003	4615 (31.1%)	3767 (30.6%)	848 (33.3%)	0.007
Previous PCI	10252 (36.6%)	7998 (36.5%)	2254 (36.6%)	0.881	5611 (37.8%)	4642 (37.7%)	969 (38.1%)	0.732
Stroke	1753 (6.3%)	1366 (6.2%)	387 (6.3%)	0.882	845 (5.7%)	660 (5.4%)	185 (7.3%)	<0.001
Chronic heart failure	3026 (10.8%)	2381 (10.9%)	645 (10.5%)	0.384	1384 (9.3%)	1129 (9.2%)	255 (10.0%)	0.180
Peripheral artery disease	1289 (4.6%)	1012 (4.6%)	277 (4.5%)	0.693	658 (4.4%)	537 (4.4%)	121 (4.8%)	0.381
Chronic obstructive pulmonary disease	1961 (7.0%)	1479 (6.8%)	482 (7.8%)	0.003	810 (5.5%)	660 (5.4%)	150 (5.9%)	0.281
Renal failure	1098 (3.9%)	853 (3.9%)	245 (4.0%)	0.757	539 (3.6%)	430 (3.5%)	109 (4.3%)	0.052
Cancer	1063 (3.8%)	814 (3.7%)	249 (4.0%)	0.231	484 (3.3%)	389 (3.2%)	95 (3.7%)	0.138

Treated iFR-group: older, more often women, DM, HT, MI, stroke

Baseline characteristics influence revascularization decision differently in iFR- vs FFR-group

iFR vs FFR 5-year MACE

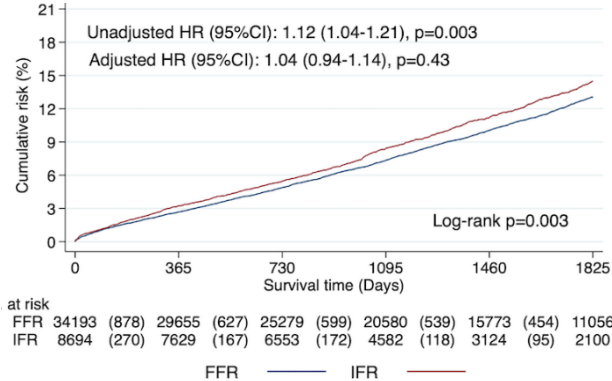
All-cause death, MI, unplanned revascularization



No difference in MACE between iFR and FFR

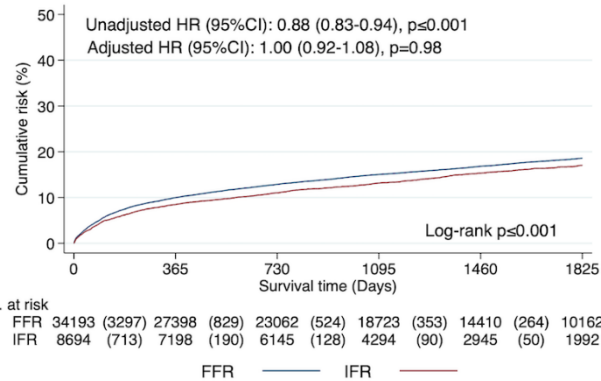
iFR vs FFR 5-year outcomes

All-cause death



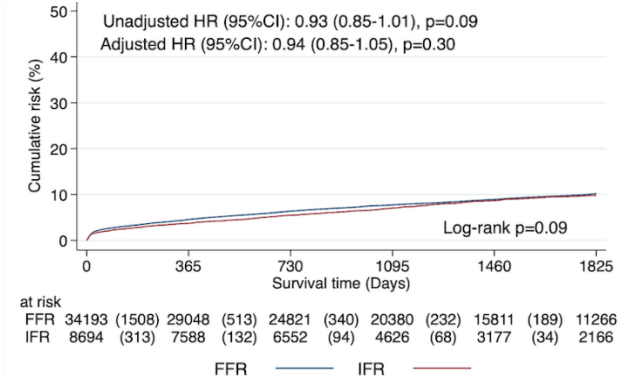
Adjusted HR 1.04 (0.94-1.14)
 $p=0.43$

Myocardial infarction



Adjusted HR 0.94 (0.85-1.05)
 $p=0.30$

Unplanned revascularization

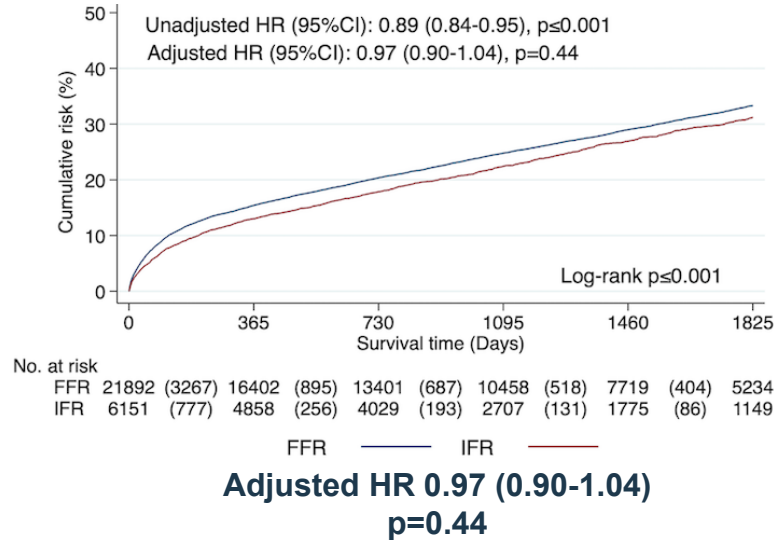


Adjusted HR 1.00 (0.92-1.08)
 $p=0.98$

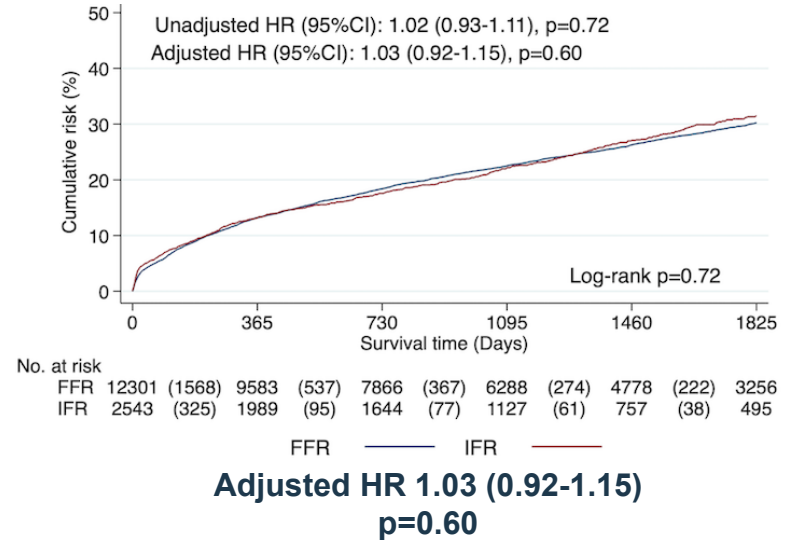
Similar outcome in all components of MACE
(all-cause death, MI, or unplanned revascularization)

Deferred vs. treated patients

MACE (Deferred)



MACE (Treated)

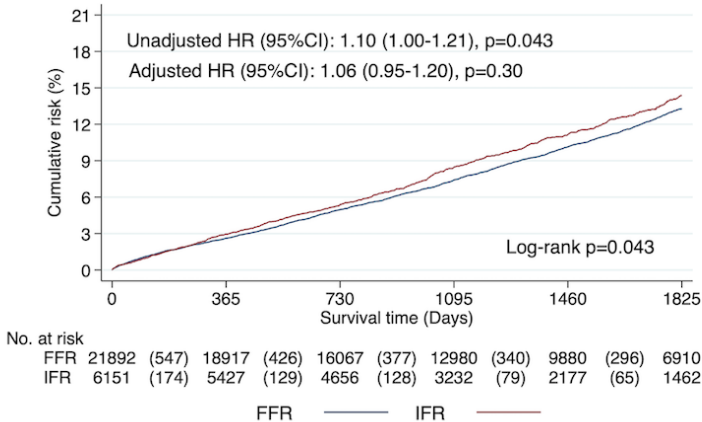


No difference in MACE between iFR and FFR

No interaction between treatment decision and outcome

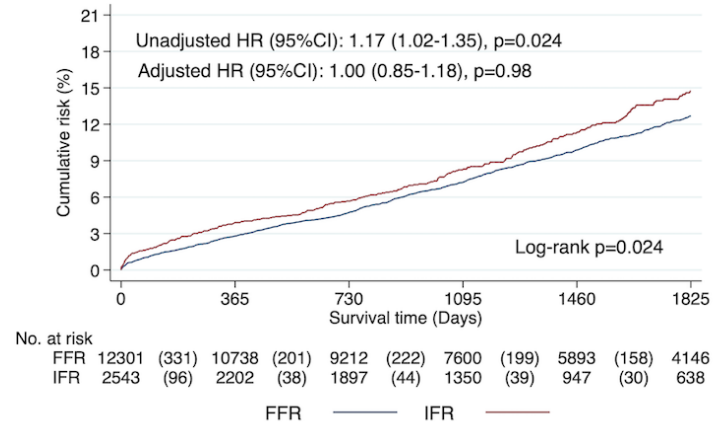
Deferred vs. treated patients

All-cause death (Deferred)



Adjusted HR 1.06 (0.95-1.20)
 $p=0.30$

All-cause death (Treated)

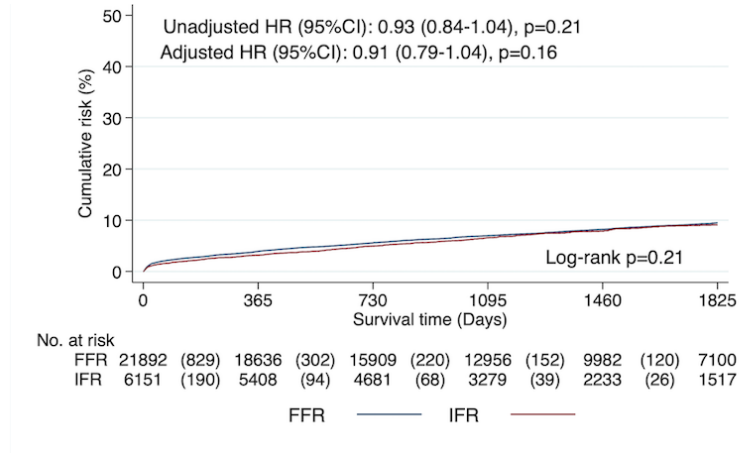


Adjusted HR 1.00 (0.85-1.18)
 $p=0.98$

No difference in All-cause death between iFR and FFR

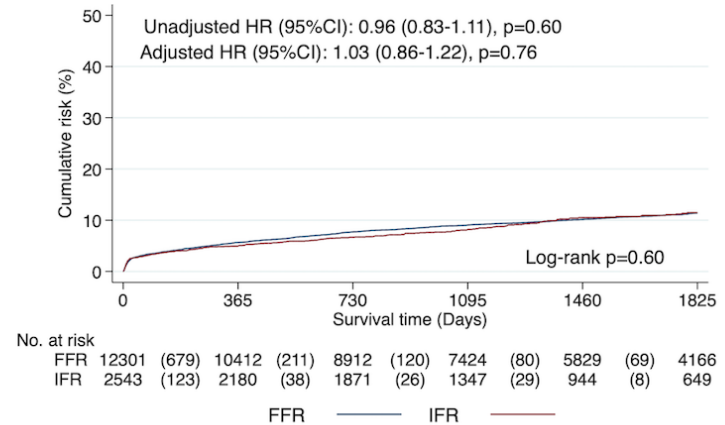
Deferred vs. treated patients

Myocardial infarction (Deferred)



Adjusted HR 0.91 (0.79-1.04)
p=0.16

Myocardial infarction (Treated)

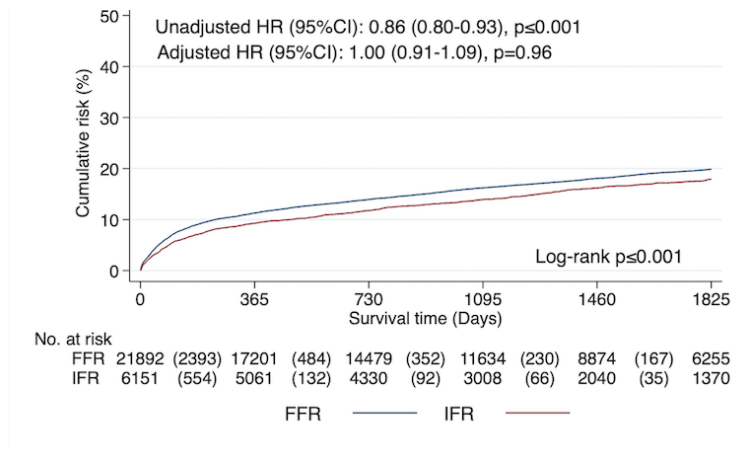


Adjusted HR 1.03 (0.86-1.22)
p=0.76

No difference in Myocardial infarction between iFR and FFR

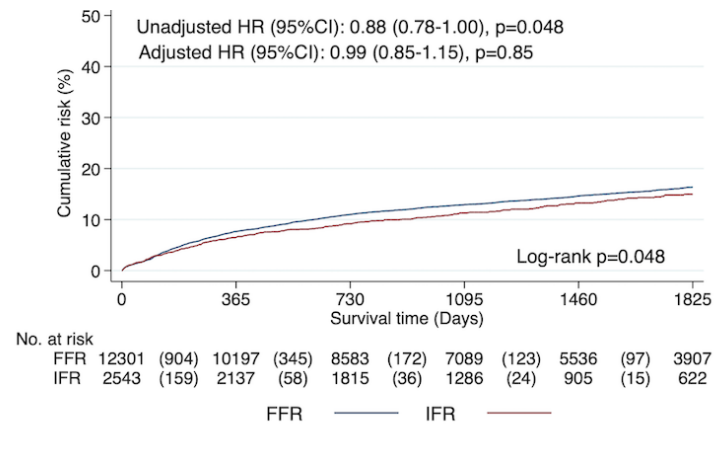
Deferred vs. treated patients

Unplanned revasc. (Deferred)



Adjusted HR 1.00 (0.91-1.09)
 $p = 0.96$

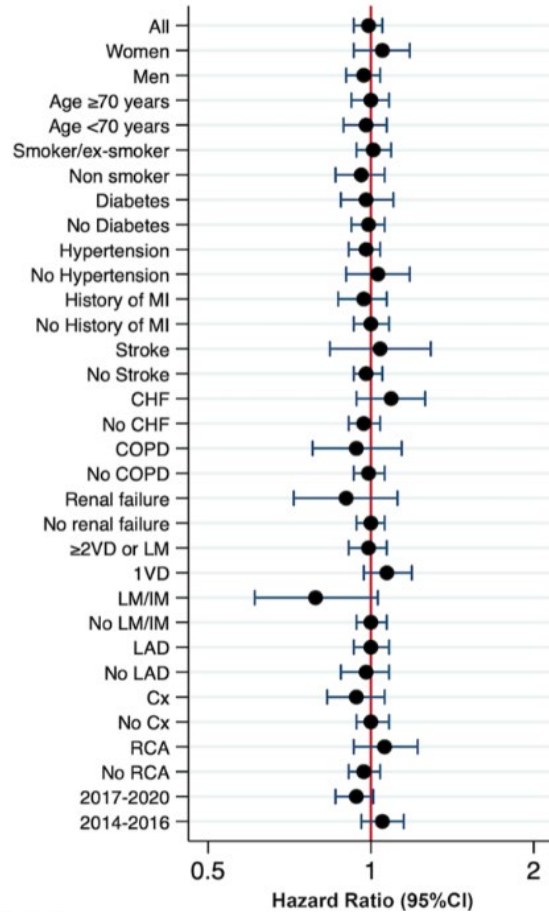
Unplanned revasc. (Treated)



Adjusted HR 0.99 (0.85-1.15)
 $p = 0.85$

No difference in Unplanned revascularization between iFR and FFR

Subgroup analyses 5-year MACE



No difference in MACE

between iFR and FFR

in any of the subgroups

Summary I

In a national registry analysis of 42 887 patients investigated with iFR or FFR with a follow-up up to 5-years:

Similar outcome between iFR and FFR

- **MACE (all-cause death, MI, unplanned revasc)**
- **All-cause death**
- **Myocardial infarction**
- **Unplanned revascularization**
- **Deferred and treated populations**

Summary II

The observed difference in mortality between iFR and FFR among treated patients in DEFINE-FLAIR could not be verified in this large nation-wide real-world all-comers registry analysis



SWEDEHEART