

GLOBAL STUDY ON COVID-19 & CVD

PRELIMINARY RESULTS (PRELIMINARY ANALYSIS OF FIRST 2500 PATIENTS)

COVID-19 IN NUMBERS

220

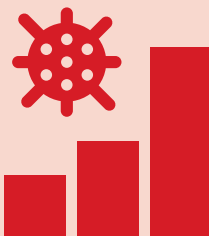
countries
affected



Nearly

200

MILLION
cases



More than

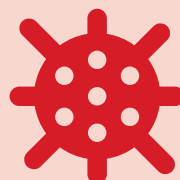
4

MILLION
deaths



COVID-19 & CVD

Pre-existing cardiovascular conditions and risk factors have been linked with worse outcomes and increased risk of death in patients with COVID-19



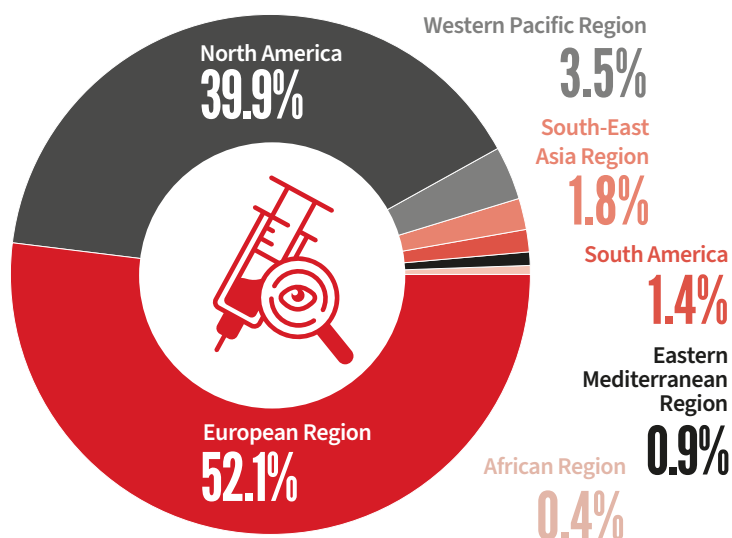
COVID-19 can also lead to serious cardiovascular conditions, including myocardial injury, arrhythmia, acute coronary syndrome and venous thromboembolism

WHF COVID-19 & CVD STUDY IS CLOSING THE RESEARCH GAP

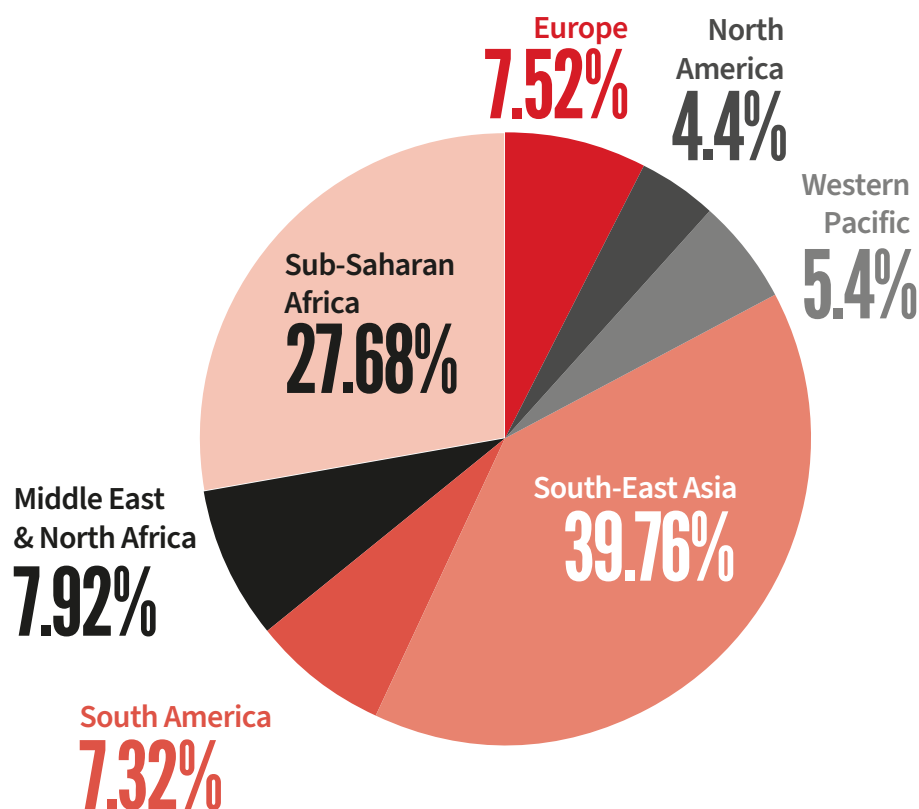


92%

of COVID-19 research comes
from Europe and North America



WHF COVID-19 AND CVD STUDY



92%



of recruited patients are from Africa (28%), Asia (53%) and Latin America (11%)

86%



are from low- and middle-income countries

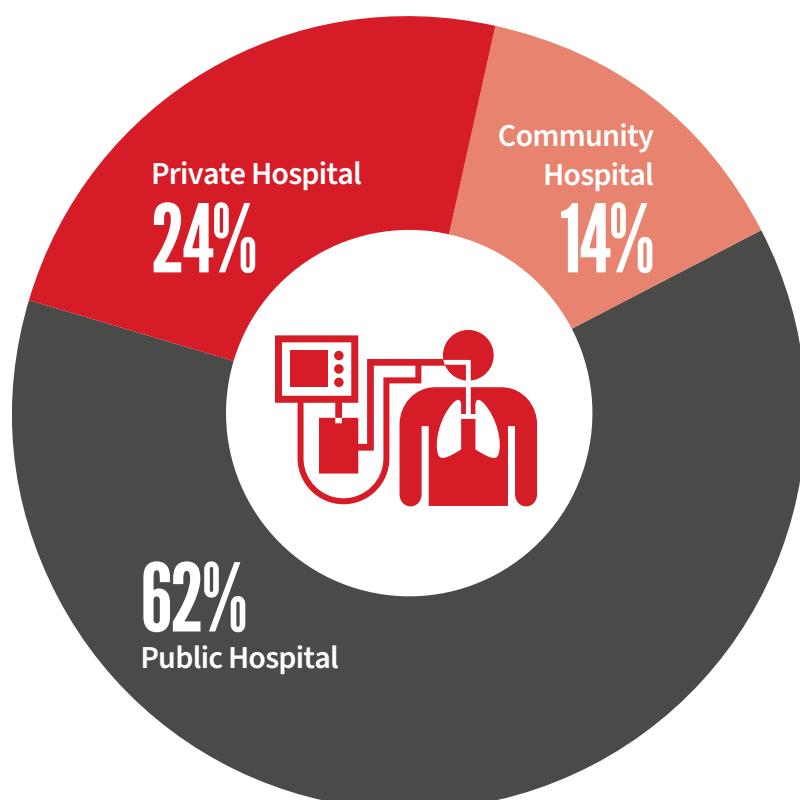
66%



are from lower middle-income countries

PARTICIPATING HOSPITALS

All participating hospitals had an ICU and ventilators



50%



of participating hospitals in Europe had specialists*

56%



of hospitals in South-East Asia had specialists* and 89% had advanced care**

50%

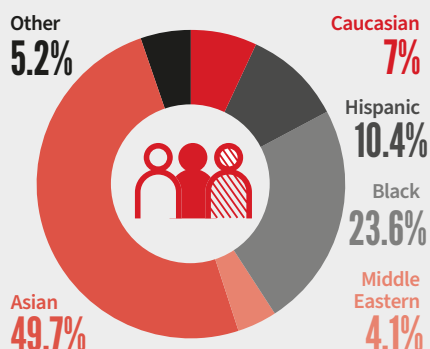


of hospitals in Sub-Saharan Africa had specialists* or advanced care**

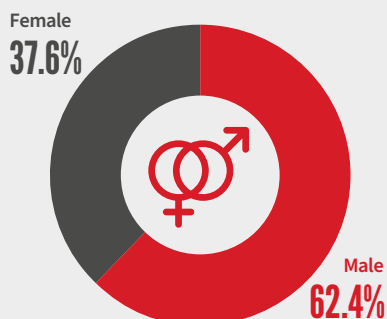
* Respiratory/infectious disease experts or cardiologists
** ECMO, ECHO, Cath lab

PATIENTS

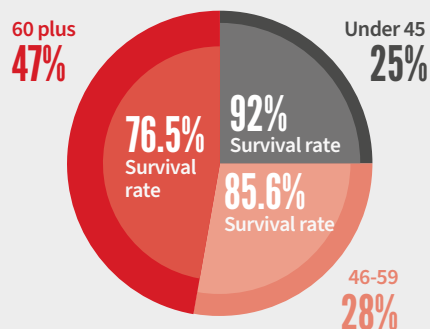
Ethnic origin



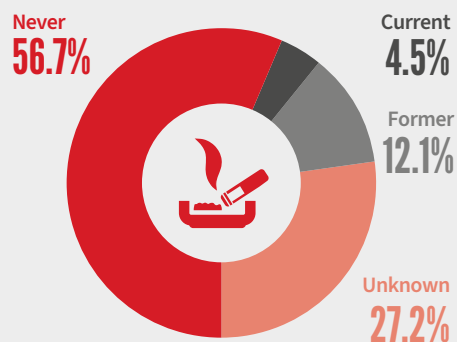
Gender



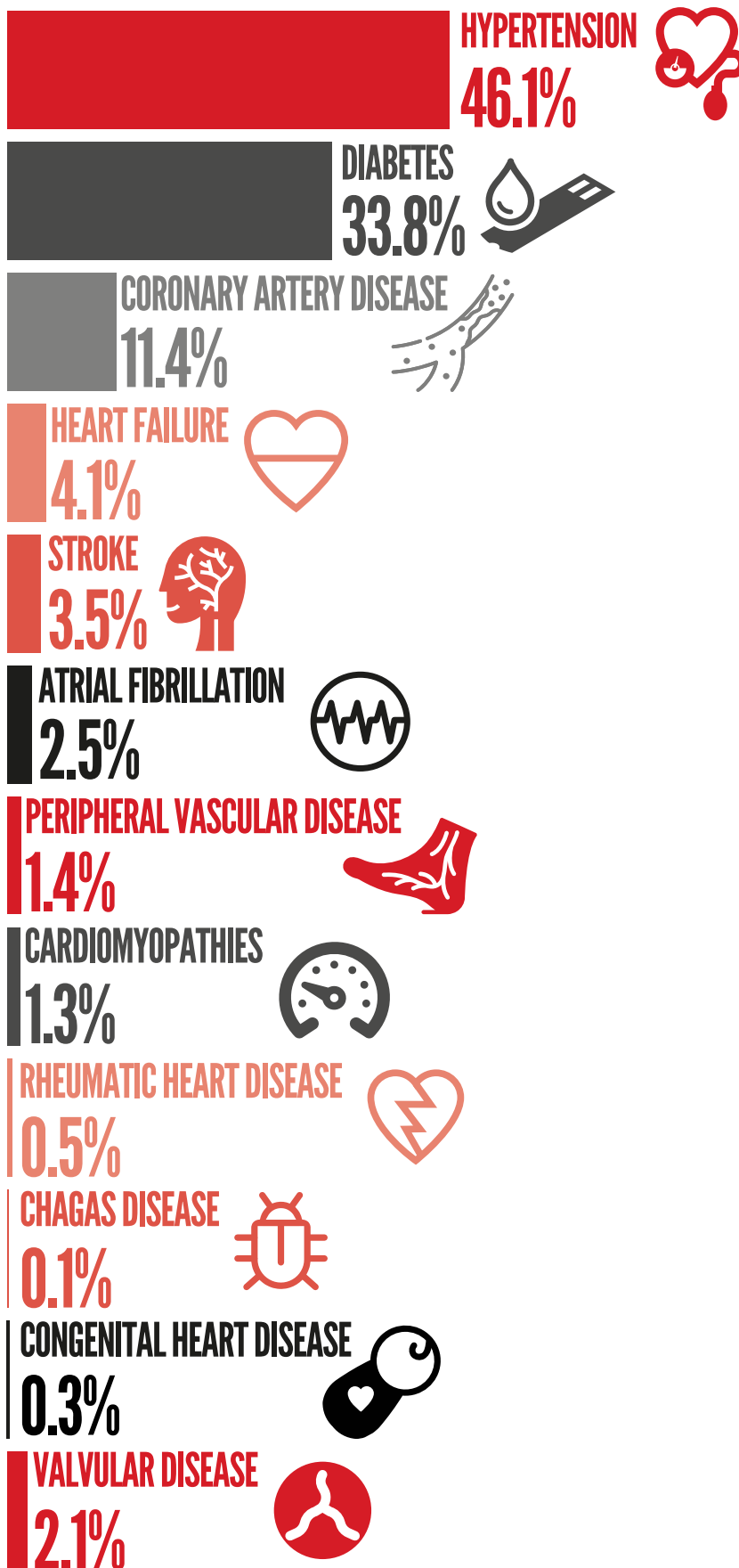
Age



Tobacco use

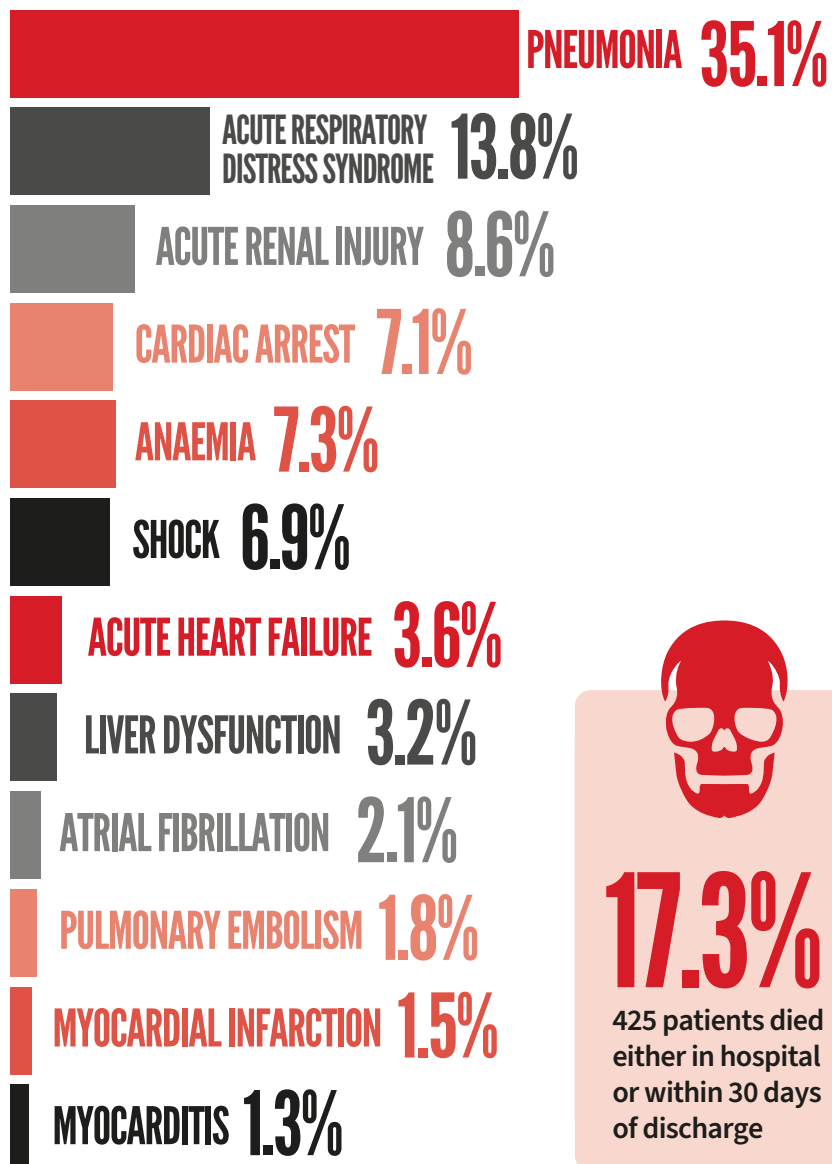


Pre-existing conditions



OUTCOMES

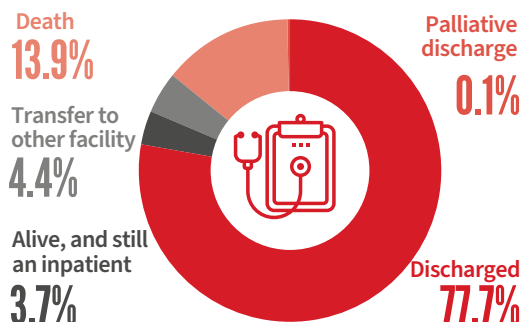
Clinical outcomes reported at discharge



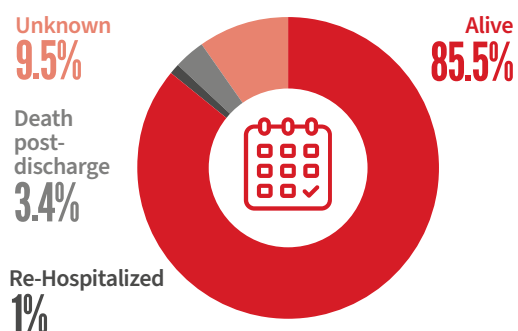
17.3%

425 patients died either in hospital or within 30 days of discharge

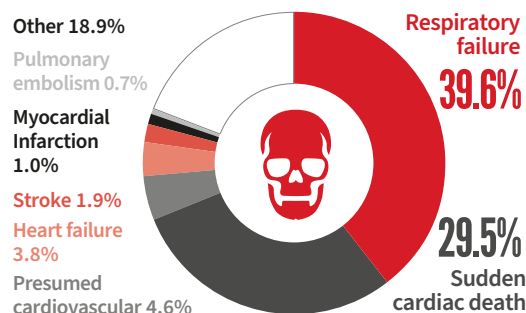
Outcomes at discharge



30 Day outcome



Cause of death



KEY FINDINGS

PRE-EXISTING CHRONIC CONDITIONS = HIGHER MORTALITY



COVID-19 patients recruited mostly from LMICs were younger*



Higher rates of hypertension and diabetes, but lower in-hospital deaths*



Increased post-discharge mortality (i.e., 17% up to 30 days)*

*compared to other cohorts from United States and Europe