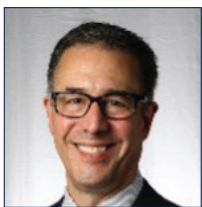
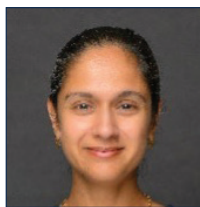


## PLANNING COMMITTEE



**James L. Januzzi, MD, FACC  
(Co-Chair)**

Adolph Hutter Professor of Medicine,  
Harvard Medical School  
Chief Scientific Officer and C.  
Michael Gibson Chair, Baim Institute  
for Clinical Research  
Cardiology Division, Massachusetts  
General Hospital



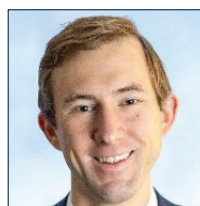
**Michelle M. Kittleson, MD, PhD,  
FACC (Co-Chair)**

Director, Post-Graduate Education in  
Heart Failure and Transplantation  
Professor of Medicine  
Smidt Heart Institute, Cedars-Sinai



**Amrut V. Ambardekar, MD, FACC**

Medical Director, Cardiac Transplant  
Program  
Director, Cardiac Amyloidosis  
Program  
Professor of Medicine, Division of  
Cardiology, University of Colorado



**Kent S. Brummel, MD, FACC**

Assistant Professor  
Division of Cardiovascular Medicine,  
University of Michigan Medical  
School



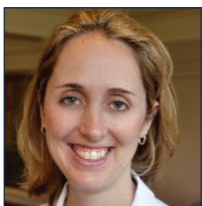
**Rodolphe Barrangou, PhD**

Distinguished Professor, Department  
of Food, Bioprocessing and Nutrition  
Sciences  
North Carolina State University



**Arthur L. Caplan, PhD**

Professor of Bioethics, Division of  
Medical Ethics  
NYU Grossman School of Medicine

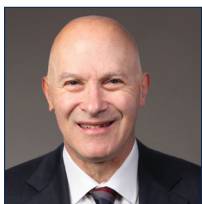


**Michelle L. O'Donoghue, MD, MPH**

McGillycuddy-Logue Endowed Chair  
in Cardiovascular Medicine  
Brigham and Women's Hospital  
Senior Investigator, TIMI Study Group  
Associate Professor, Harvard Medical  
School

---

## LEADERSHIP



**Christopher M. Kramer, MD, FACC**

ACC President