

OPTIMAL USE OF HEALTH, QUALITY OF LIFE, AND FUNCTIONAL STATUS PROS

Nicole L.Lohr, MD PhD
FACC

Assistant Professor,
Cardiovascular Medicine

Medical College of
Wisconsin

External Pressures on the Physician Patient Relationship

Physician Burnout

Compressed Clinical Grids

EMR Reporting

Reduced Reimbursement



Increasing Costs

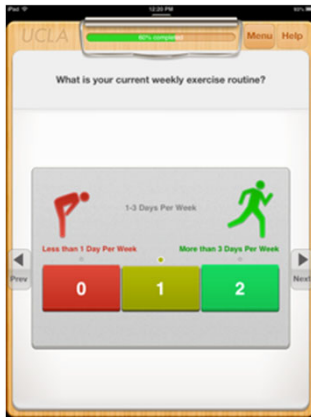
Greater Medical Complexity

Variable Medical knowledge

Advertisement/Marketing

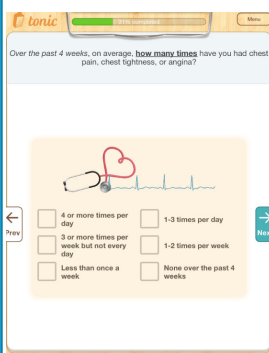
HOW CAN WE EFFECTIVELY SHARE MEDICAL DECISIONS?

Using PRO for Chest Pain in Clinic ... An Engagement Opportunity!

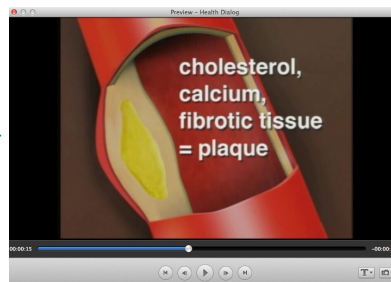


- Froedtert/MCW was a SMARTCare site
- Froedtert is an academic hospital with a diverse cross section of patients (race, age, gender, education)
- Developed a sub-study to enroll 16 Patients in one month
- 3 attending Cardiologists were selected by a Physician Champion
- Interns and Residents observed the Shared Decision-Making Process

A Physician derived workflow for PROs



- Patient arrives early for clinic appointment
- SAQ-7 or HQOL Survey on iPad



- Patients shown a video from Cardio Smart relating to Coronary artery disease



- MD's given copy of survey results prior to visit

Physician Survey Results on the Real Time use of PRO in clinic

Was spending time discussing patient decision making preferences and the results of the functional status survey helpful to your decision-making process as a clinician?	VERY HELPFUL
Did you think this process influenced the way you provided care?	POSITIVE IMPACT
Were you more likely to consider or recommend medical therapy as a result of this change in workflow?	YES
How helpful is it to your clinical process to have baseline functional status prior to an initial consultation?	VERY HELPFUL
Did knowing more about how your patient's preferences for decision making change the way you engage them in that process?	YES

Physician Experience with PRO... in their own words

...allowing me to see the survey prior to seeing the patient is very **helpful in getting information that I would likely not obtain from my routine visits...** I found that have the survey results proved to be helpful for both encounters.

...did not change my decision for therapy in my limited number of cases, however **it helped me know how to tailor the conversation based on recognizing patient preferences...having such information upfront would help to modify the initial plan to better fit patient preferences.**

Optional: Add your personal comments and place them in the envelope with survey

A note from your SMARTCare team:

As Healthcare payers (private insurance, Medicare and Medicaid) continue to make their transition from a fee for service model to one linked to quality of care provided and measured patient outcomes.

We would appreciate if you would take the time to share your personal thoughts or ways on how to improve the program.

How has SMARTCare helped you?

I am bringing more attention to the figure & research I appreciate any information on my heart disease!

Optional: Add your personal comments and place them in the envelope with survey

A note from your SMARTCare team:

Healthcare payers (private insurance, Medicare and Medicaid) continue to make their transition from a fee for service model to one linked to quality of care provided and measured patient outcomes.

We would appreciate if you would take the time to share your personal thoughts or ways on how to improve the program.

How has SMARTCare helped you?

Thank you for caring

Froedter & MEDICAL COLLEGE OF WISCONSIN SMARTCare Follow-Up Survey (HQOL)

In the last 4 weeks, have you been bothered by having to walk indoors on level ground?

No A little Some A Lot

In the last 4 weeks, have you been bothered by having to garden, vacuum, or carry groceries?

No A little Some A Lot

In the last 4 weeks, have you been bothered by having to climb a hill or a flight of stairs without stopping?

No A little Some A Lot

In the last 4 weeks, have you been bothered by having to walk more than 100 yards at a brisk pace?

No A little Some A Lot

HAVE HAD HEART + VASCULAR DISEASE SINCE 1990. 5 STENTS prior to Bypass Surgery. VERY LIMITED TO EXERCISE ROUTINE. MEDICAL TEAM AT FROEDTER IS EXCELLENT.

Thank you

PROS... Opportunities and Challenges

Physicians found PROs a helpful mechanism for shared decision making in the right setting with the right workflow.

Potential barriers include identifying formats for effective use of collected information during and after visit

Physicians express concerns regarding appropriate time management and documentation.

PRO derived metrics must contain actionable endpoints.

HOW DO WE MAKE THIS HAPPEN?