



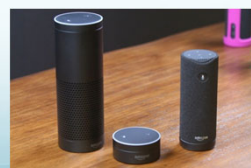
The technology landscape for PROs

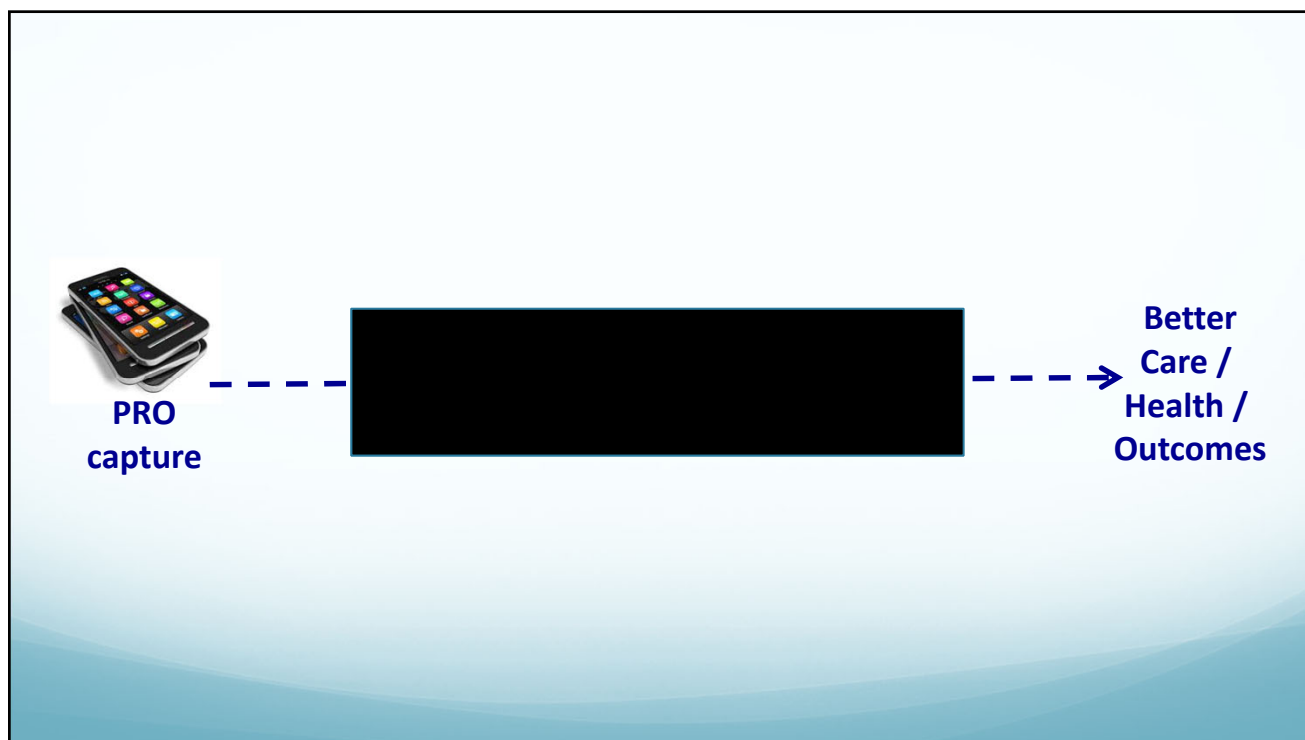
John S. Rumsfeld, MD PhD FACC
 Chief Innovation Officer, American College of Cardiology
 Professor of Medicine, University of Colorado School of Medicine

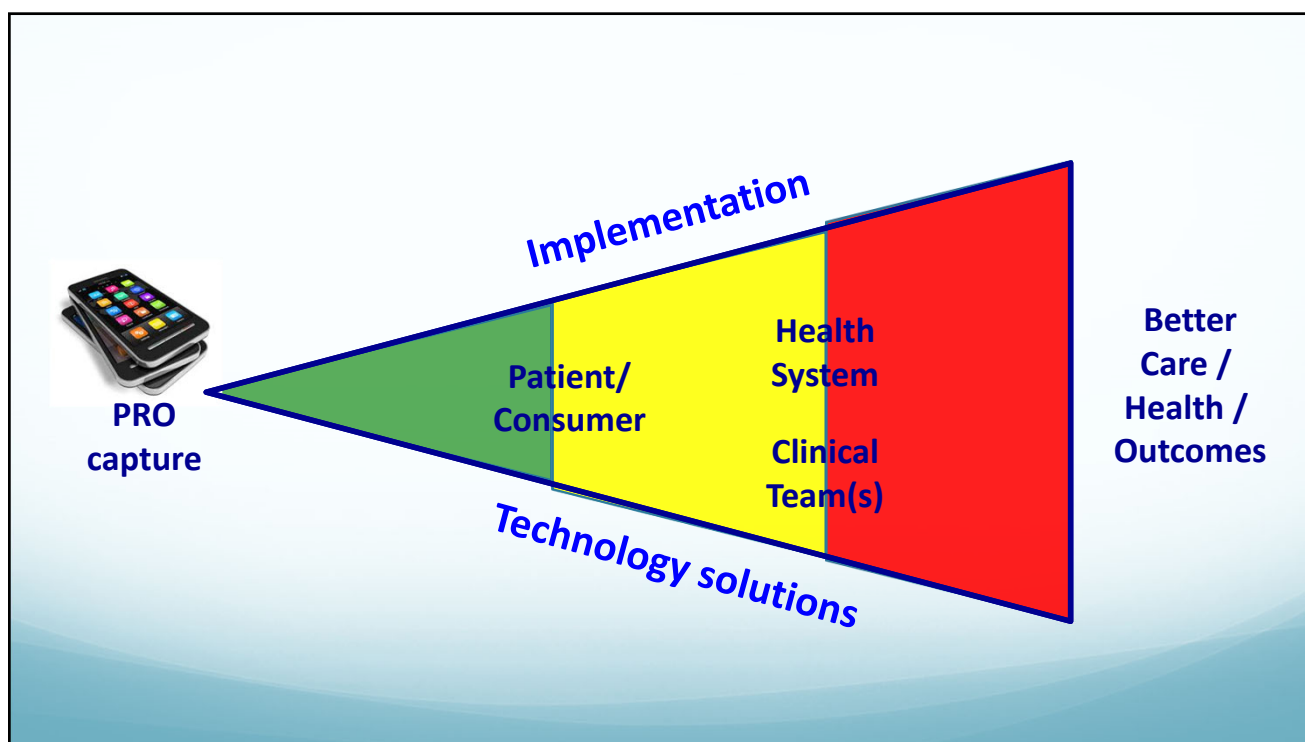
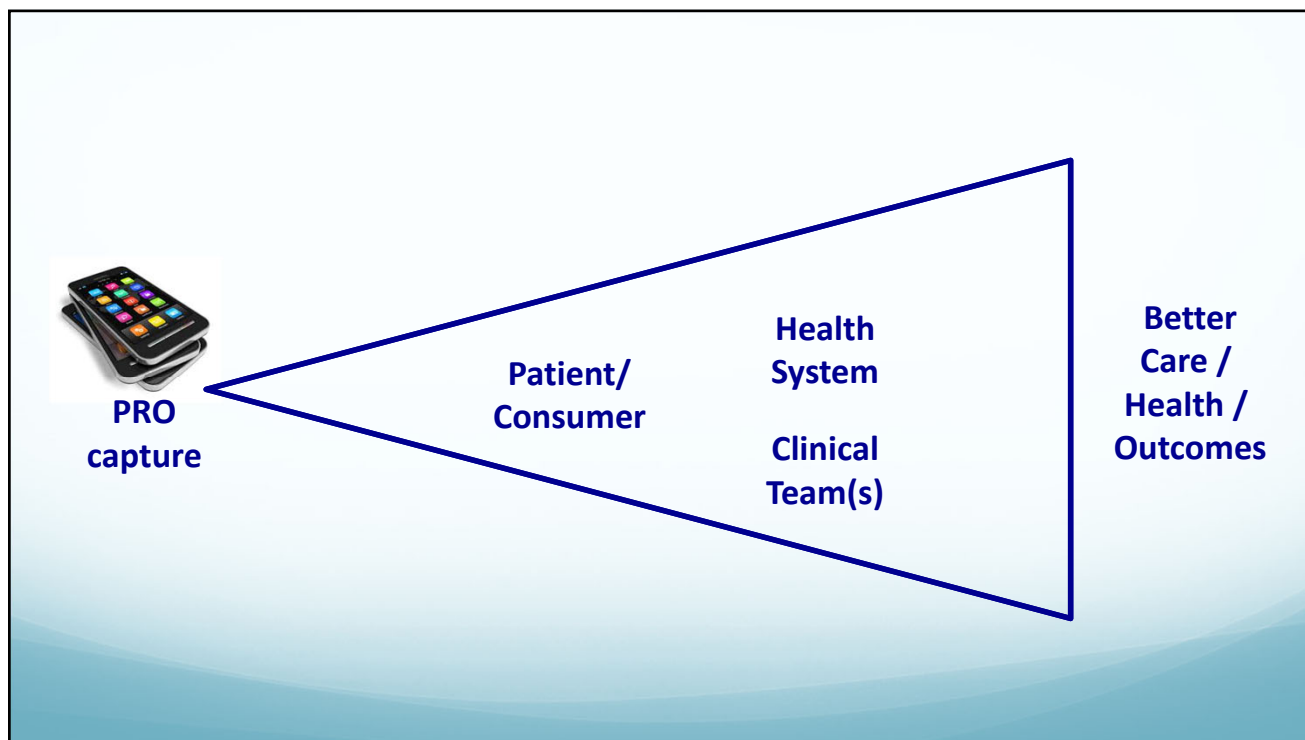


**“The future is already here
 – it’s just not very evenly distributed”**

- William Gibson (author)








PROVIDER PAYER PHARMA CONSUMER INVESTOR

American College of Cardiology outlines agenda for implementing, verifying new technologies

By **Dave Muoio** | December 12, 2017

SHARE   

As digital health, big data, and personalized medicine continue to stake their claim within healthcare, professional associations are **starting to take notice**. The latest is the American College of Cardiology (ACC), which recently **published a policy paper** highlighting its outlook on the future of care and technology's role within it.

"Important within [healthcare's] transformation are newly developed and rapidly evolving technology-based innovations," members of the ACC wrote in the Journal of the American College of Cardiology. "Achieving meaningful transformation requires organizational governance to guide the development of clinical programs and the next phase of research methodologies, and to align the objectives from a cooperative network of partners and stakeholders."

news.com



HEALTH POLICY STATEMENT

2017 Roadmap for Innovation—ACC Health Policy Statement on Healthcare Transformation in the Era of Digital Health, Big Data, and Precision Health

A Report of the American College of Cardiology Task Force on Health Policy Statements and Systems of Care


AMERICAN COLLEGE of CARDIOLOGY

Bhavnani S. et al. J Am Coll Cardiol. 2017 Nov 28;70(21):2696-2718

INNOVATION@ACC



KCCQ-12

The following questions refer to your **heart failure** and how it may affect your life. Please read and complete the following questions. There are no right or wrong answers. Please mark the answer that best applies to you.

1. **Heart failure** affects different people in different ways. Some feel shortness of breath while others feel fatigue. Please indicate how much you are limited by **heart failure** (shortness of breath or fatigue) in your ability to do the following activities over the past 2 weeks.

Activity	Extremely limited	Quite a bit limited	Moderately limited	Slightly limited	Not at all limited	Limited for other reasons or did not do the activity
a. Showering/bathing	<input type="radio"/>	<input type="radio"/>	<input type="radio"/>	<input type="radio"/>	<input type="radio"/>	<input type="radio"/>
b. Walking 1 block on level ground	<input type="radio"/>	<input type="radio"/>	<input type="radio"/>	<input type="radio"/>	<input type="radio"/>	<input type="radio"/>
c. Hurrying or jogging (as if to catch a bus)	<input type="radio"/>	<input type="radio"/>	<input type="radio"/>	<input type="radio"/>	<input type="radio"/>	<input type="radio"/>

2. Over the past 2 weeks, how many times did you have **swelling** in your feet, ankles or legs when you woke up in the morning?

Four images are shown below the form, connected by lines to the form's border:

- A smartwatch on a wrist.
- A tablet displaying a graph and a stethoscope.
- A smart speaker (Amazon Echo).
- A face being scanned by a facial recognition system.



**AMERICAN
COLLEGE of
CARDIOLOGY**

INNOVATION@ACC



email: jrumfeld@acc.org

 [@DrJRums](https://twitter.com/DrJRums)

Moving Cardiovascular
Care **FORWARD**