

## CV Team - Abstracts and Posters

### Submission Guidelines

You will need to prepare and submit a summary or “abstract” of your work, using the instructions that follow. If accepted, the abstract will be used to develop your **Live Poster Session**.

#### **ABSTRACTS**

##### Requirements:

- Primary authors must be a CV team professional (non-physician). PharmDs, APRNs, PAs, Allied Health Professionals and Students are invited to submit Abstracts for the CV Team lounge during the annual ACC Scientific Sessions.
- Must illustrate the role(s) of the cardiovascular professional.
- Ideally exemplify interprofessional collaboration.
- Should be original work, meaning it has not previously published or presented to other professional organizations.

##### Submission:

- Abstracts will be submitted electronically [ACC.24 CV Team APRN Abstract Submission](#)
- Abstracts may not contain more than 1,900 characters, not including spaces.
- Abstracts may be submitted in one of the following categories:
  - Original Research
    - ❖ Examples- PhD Dissertations: Abstracts must describe original research
  - Quality Improvement /Evidence Based Practice
    - ❖ Examples-DNP/ MSN Capstone projects, hospital or clinic quality improvement projects.
- Abstracts shall be presented under the following headings:
  - **Title:** with Author (s), Affiliated Institution
  - **Background and Introduction:** In an initial paragraph, provide relevant information regarding the background and purpose of the study, preferably in no more than one or two sentences. Cite the significance of the issue with a clear, concise, justified statement of the purpose of the project or aim of the research.
  - **Method:**
    - **Research:** design, setting, sample, procedures, instrument measures, data collection, data analysis strategy, human subject protection
    - **QI/EBP:** May include-QI framework, stakeholders, setting, project components, project timeline, outcome and process measures identified.
  - **Results:** Summarize the results in sufficient detail to support the conclusions.

- **Research:** data linked to study hypothesis aims, report test statistics and significance
    - **QI/EBP:** outcome and process measure findings
  - **Conclusion/Implications/Discussion:** State the conclusions reached.
    - **Research:** accurate interpretation of results, limitations, future research, practice recommendations
    - **QI/EBP:** conclusion based on findings, next steps or practice and recommendations.
    - Concisely state in a couple of sentences, the main clinical implications (or significance) of your study.
  - **References**

## POSTERS

- Poster size: 36 x 48 inch
- Example:

**Abstract Title Goes Here**  
Subtitle goes here

Author\*, Author\*, Author\*  
University, City, State; University, City, State;

### BACKGROUND

Add text here.

### METHODS

Add text here.

### RESULTS

Add text here.

### CONCLUSION

Add text here.

**Main finding goes here. Keep the message simple, short and easy to understand.**

**Use a large font size and emphasize the important words.**

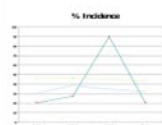
ADD OPTIONAL CONTACT INFO:  
For more information, scan the QR code, go to [www.name.com](http://www.name.com), email [name@name.com](mailto:name@name.com), or on social media @socialmediahandle

**ACC.23**  
together with  
**WCC**

### DISCUSSION

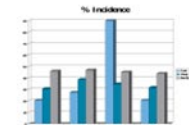
Add text here.

FIGURE 1



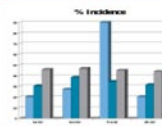
Add text here.

FIGURE 2



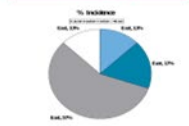
Add text here.

FIGURE 3



Add text here.

FIGURE 4



Add text here.

### DISCLOSURE INFORMATION

Author\* Disclosure.  
Author\* Disclosure.

