

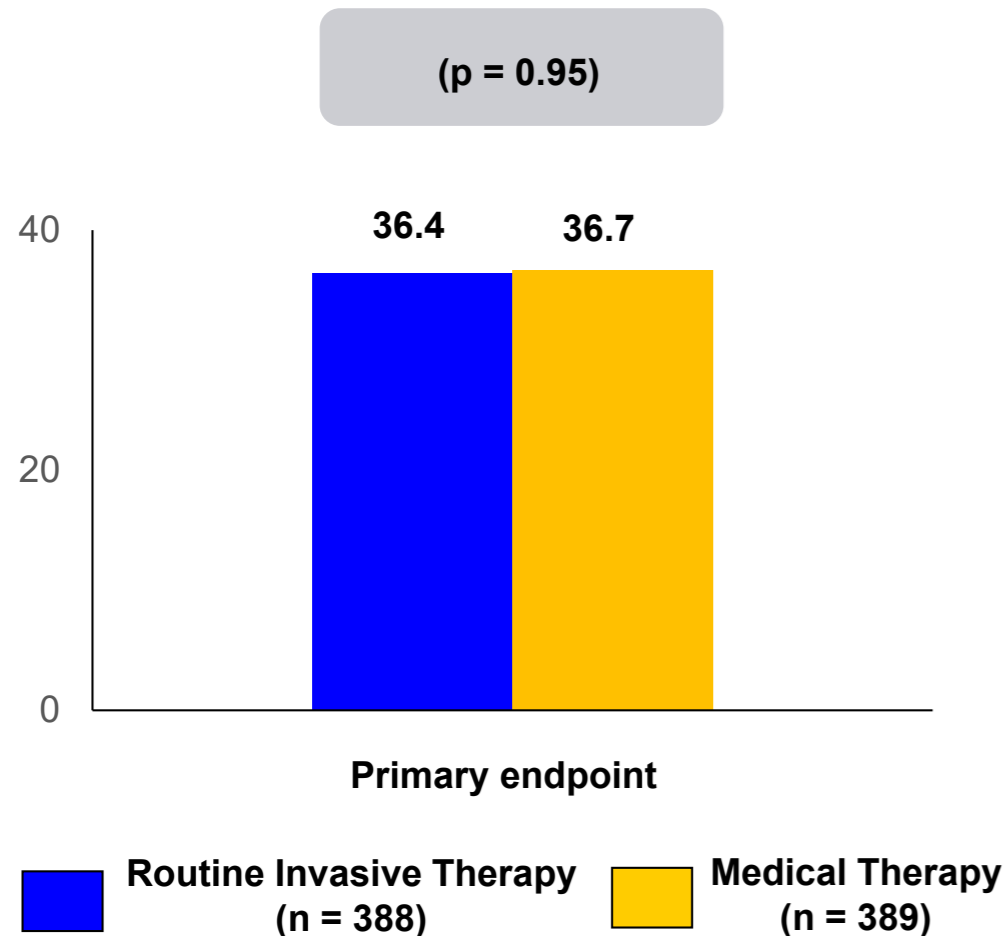
# ISCHEMIA-CKD

#AHA19



AMERICAN  
COLLEGE of  
CARDIOLOGY

**Trial Description:** Patients with stable ischemic heart disease, moderate to severe ischemia, and chronic kidney disease were randomized to routine invasive therapy vs. medical therapy.



## RESULTS

- Primary efficacy endpoint: Death or MI at 2.3 years, occurred in 36.4% of the routine invasive group vs. 36.7% of the medical therapy group (p = 0.95)
- Improvement in symptoms was not observed irrespective of angina burden

## CONCLUSIONS

- Among patients with stable ischemic heart disease, moderate to severe ischemia on noninvasive stress testing, and advanced chronic kidney disease, routine invasive therapy failed to reduce the incidence of death or MI compared with optimal medical therapy
- Routine invasive therapy failed to improve angina symptoms and quality of life compared with medical therapy

Presented by Drs. Sripal Bangalore and John Spertus at AHA 2019