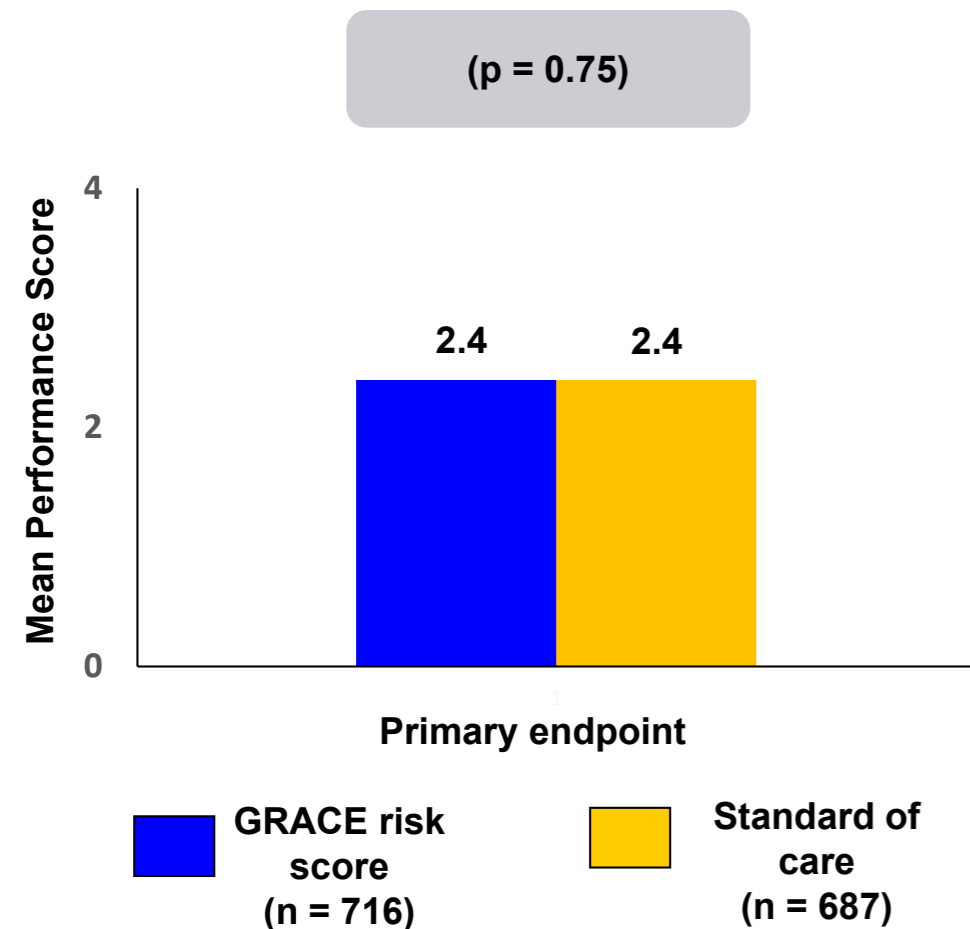


Trial Description: Patients with an acute coronary syndrome were randomized to risk stratification with the GRACE risk score versus standard of care.



RESULTS

- Primary endpoint: mean Performance Score at hospital discharge was 2.4 in the GRACE risk stratification group compared with 2.4 in the standard of care group (p = 0.75)
- Cardiovascular death, myocardial infarction, or hospitalization for heart failure at 6 months: 6.4% in the GRACE risk stratification group vs. 6.8% in the standard of care group (p = 0.86)

CONCLUSIONS

- Among patients with an acute coronary syndrome, risk stratification with the GRACE score with decision support recommendations failed to improve a performance measure composed of coronary angiography, use of guideline medications, and referral to cardiac rehabilitation

Presented by Dr. Derek Chew at ESC Congress 2019