

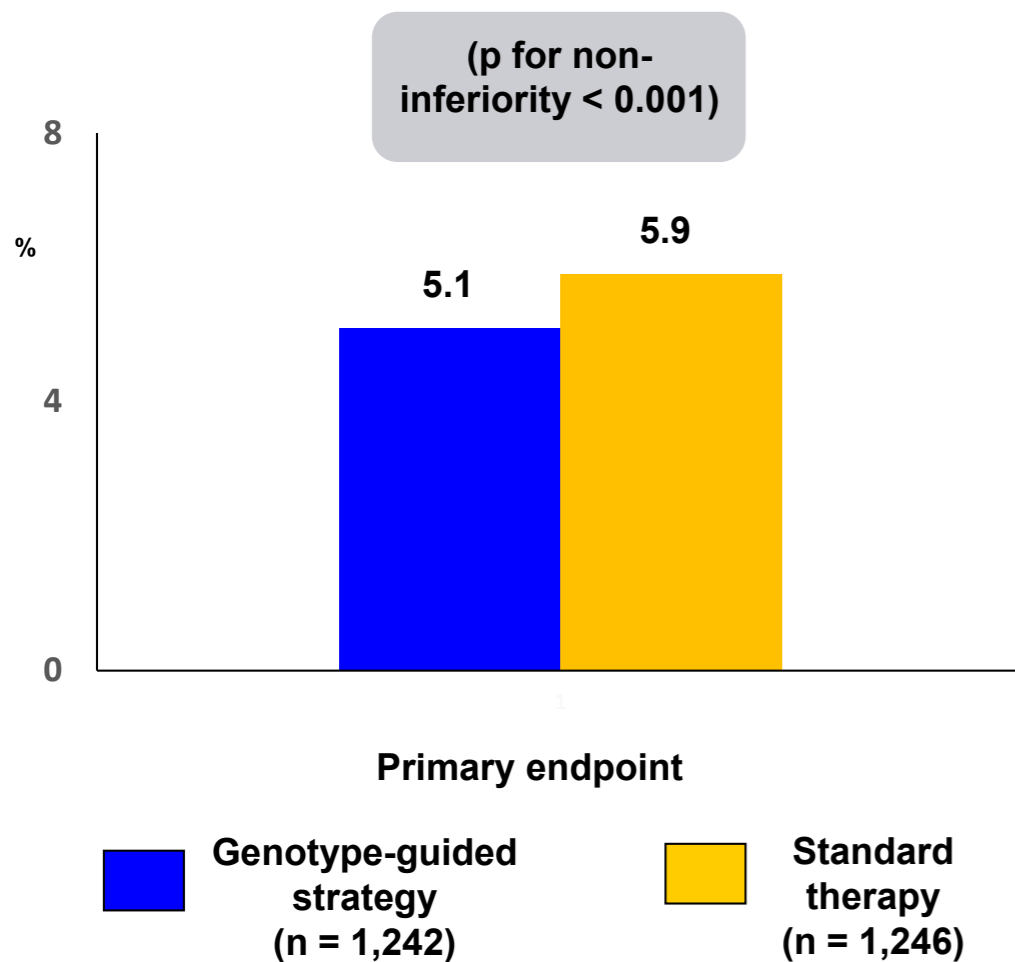
POPular Genetics

#ESCCongress



AMERICAN
COLLEGE of
CARDIOLOGY

Trial Description: Patients undergoing primary PCI for STEMI were randomized to genotype-guided strategy for selection of oral P2Y₁₂ inhibitor vs. standard therapy with ticagrelor or prasugrel.



RESULTS

- Primary net endpoint: death, MI, stroke, stent thrombosis, or major bleeding (PLATO criteria) at 12 months occurred in 5.1% of the genotype-guided group compared with 5.9% of the standard care group (p for noninferiority < 0.001)

CONCLUSIONS

- Among patients with STEMI undergoing primary PCI, a genotype-guided strategy vs. standard of care was associated with noninferiority with respect to a net composite outcome

Claassens DM, et al. *N Engl J Med* 2019;Sep 3:[Epub]