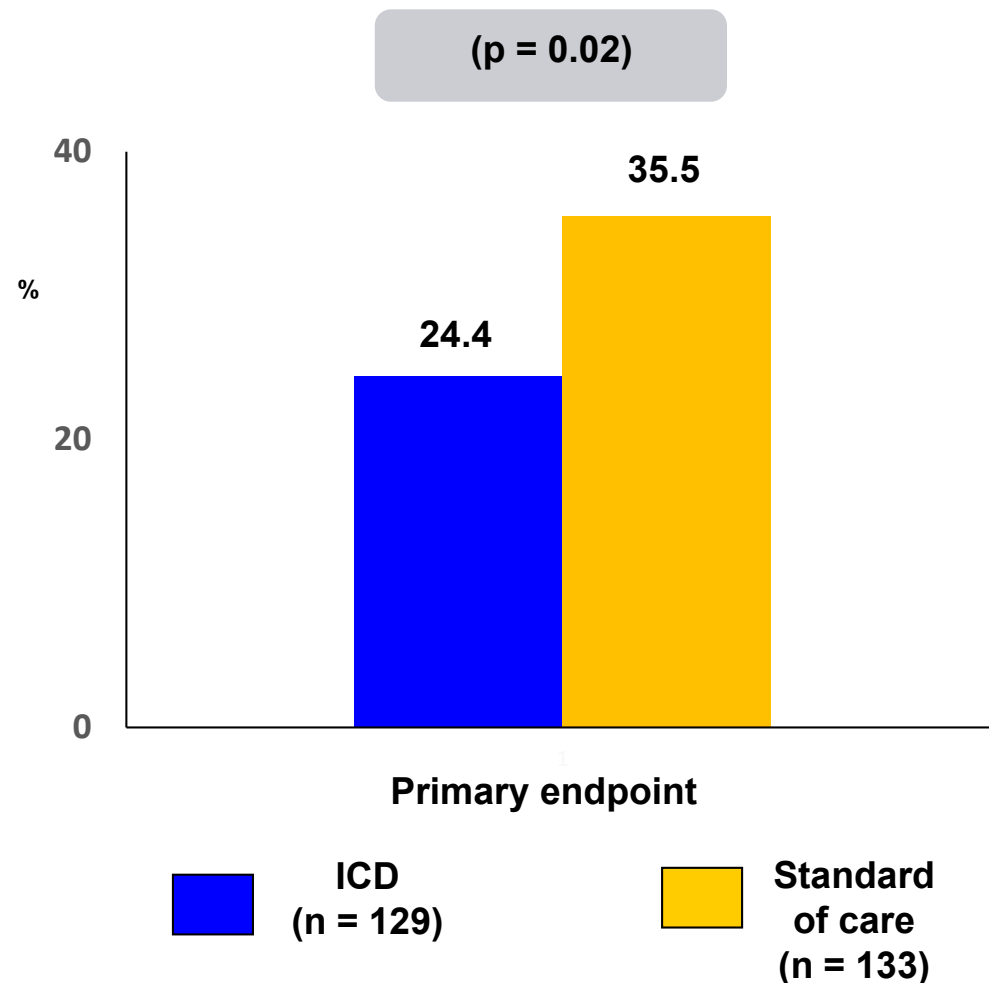


Trial Description: STEMI patients 30-60 days after their event were randomized to ICD versus standard of care.



RESULTS

- Primary net endpoint: all-cause mortality at 3 years occurred in 24.4% of the ICD group compared with 35.5% of the standard of care group (p = 0.02)

CONCLUSIONS

- Among STEMI patients who underwent primary PCI, early ICD implantation (within 30-60 days) in high-risk patients was beneficial
- Early ICD implantation was associated with a reduction in all-cause mortality at 3 years compared with standard of care

Presented by Dr. Danielle Haanschoten at ESC Congress 2019